



HPNLS-HO-WD

Line Voltage Linear LED Strip
Fixture with Warm Dim



Customer: _____ Date: _____

Project: _____

| | |
|-------------------------|--|
| Wattage | 8W or 16W per linear ft. |
| Input Voltage | 90-120V, 230-277V |
| Control | Forward/Reverse Phase Line Dimmer, 0-10V, DALI, DMX* |
| LED Spacing | 1.5" on Center |
| Length | 12", 24", 36", 48", 96" |
| Total Height | 1.75" (not including clip) |
| Total Width | 1.68" |
| Color Options | 2700K, 3000K, 3500K, 4000K, 5000K |
| Mounting | Fixed, Swivel, Hinge, 3" Arc, or 6" Arc |
| Available Optics | 10°, 30°, 60°, 10° x 60°, 30° x 60°, 120° |
| Rating | IP50, IP67 |
| CRI | 90 + CRI |
| Power Cable | UL Standard 10 ft. |
| Dimming | Patented CleanDim® Technology ensures even dimming from 0-100%. |
| Finish | Black, White, Grey |
| Custom | Anodized Aluminum |
| Materials | Contact Factory |
| Max Run | 40 ft. @ 120V (16W) |
| Environmental | Operating temperature: -40°F-140°F Ambient(-40°C-60°C)** Storage temperature: -40°F-140°F Ambient indoor fixtures operation limited to =<50% relative humidity |

*Uses Boca SDS Module for 0-10V, DALI, or DMX Dimming.

** Military spec available under special request-lead times may be impacted.

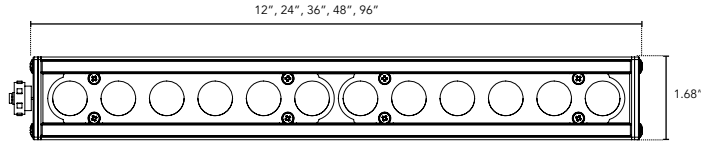


PRODUCT SPECIFICATIONS:

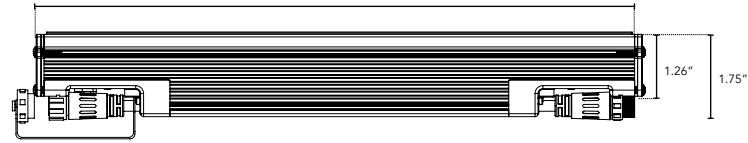
| | WATTAGE | COLOR OPTION | OPTIC | VOLTAGE | FINISH | LOCATION | MOUNTING |
|--------------------|---|---|---|----------------------------|---|---|--|
| HPNLS-HO-WD | 8W 16W | Low End Warm Dim 2000K-3000K *Standard Option - Select None for High End Warm Dim Custom CCT: *Select a CCT for both Low End and High End 2700K 4000K 3000K 5000K 3500K | High End 10° 30° 60° 10°x60° 30°x60° 120° | 120V 277V | W White B Black G Gray | I Interior-IP50 E Exterior IP67 K Extreme Environment IP69K | F Fixed S Swivel H Hinge 3Arc 3" Arc Swivel 6Arc 6" Arc Swivel V Vandal Resistant |
| | LENS | BODY OPTIONS | | | | | |
| | C Clear D Diffused SI Satin Ice (Interior Use Only) OP Opal White | SB Square Baffle ASYM Asymmetric Baffle SKB Kicker Baffle HL* Hexcell Louver (Cannot be used with Satin Ice White or 120° optic) | | | | | |

DIMENSIONS:

For vertical installation and installations above 4' please contact the factory for specific mounting instructions.



Plan View

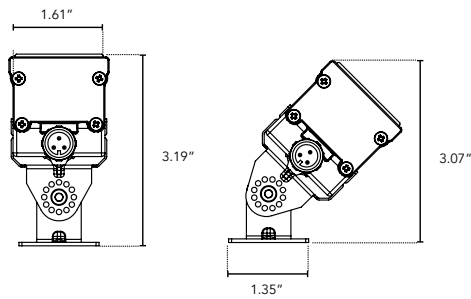


Elevation View

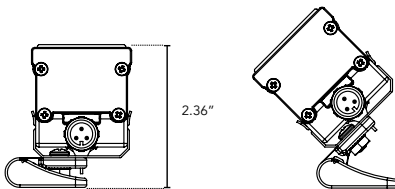
MOUNTING INFORMATION:

Note: Fixtures 1-2ft, Place clips 3" from edge as shown. Fixtures more than 2ft., Place clips 3.5" from edges as shown.

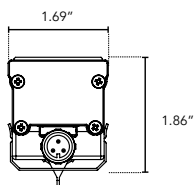
Swivel



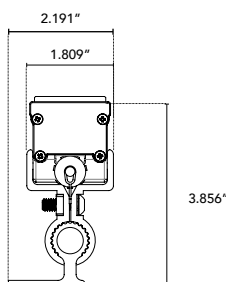
Hinge



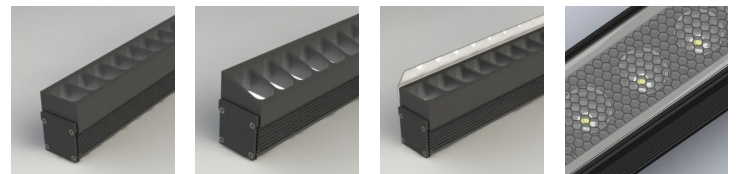
Fixed



Vandal Resistant



BAFFLE DETAILS:



SB

ASYM

SKB

HL

BAFFLE SQUARE - SB, ASYM, SKB

The design cuts off light at 90°, utilizing lightweight black PVC with non-reflective surfaces to avoid glare from interior sections. A one-piece baffle slides onto the extruded housing. The SB only adds 0.75" to the overall height, the ASYM adds 0.90" to the overall height, and the SKB adds 1.625" to the overall height.

HEXCELL LOUVER - HL

The louver cannot be utilized when no optic (120°) is specified. It is located flush to the secondary optic, preventing unwanted striation, and is positioned behind the lens to ensure no damage occurs during installation or afterward, also preventing dust build-up. The louver ships pre-fitted, making on-site fixture installation easy, with no unsightly clips, screws, or brackets. It can be used with other baffles and adds nothing to the overall height. Additional charges may apply.

LENS OPTIONS:

DIFFUSED GLASS

- 87% transmission
- Lens is 1/8" (.09) thick, adds 1/16" to overall height of fixture
- Additional charges apply

SATIN ICE

- Best for direct view use
- 42% transmission
- Lens is 1/4" (.25) thick, adds 1/8" to overall height of fixture
- Additional charges apply