



InGrade

In Ground, Recessed LED Light Chamber

Customer: _____ Date: _____

Project: _____

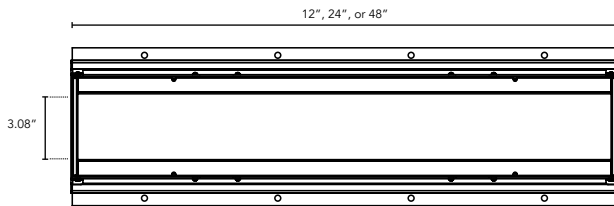


Available Length	12", 24", 48"
Compatible Light Fixtures	HPNLS, Tri-Light, Lumeline
Minimum Drainage Rates	12" (0.064 gal/min.), 24" (0.119 gal/min.), 48" (0.231 gal/min.)
Ground Materials	Gravel, concrete with drainage system
Maximum Height	3,000 lbs. (over average car tire)
Ratings	IP50, IP67
Finish	Clear Anodized Aluminum
Total Height	6.43"
Total Width	7.40"
Materials	Anodized Aluminum
Environmental	Operating temperature: -40°F-140°F Ambient (-40°C-60°C)** Storage temperature: -40°F-140°F Ambient indoor fixtures operation limited to =<50% relative humidity

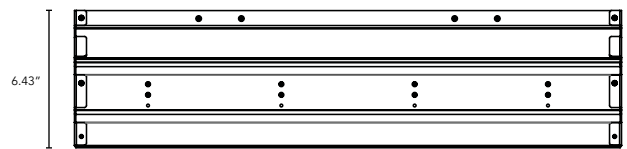
** Military spec available under special request-lead times may be impacted.



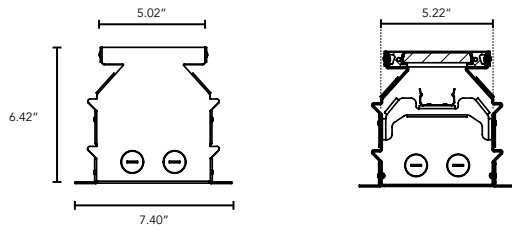
DIMENSIONS:



Plan View



Elevation View



End View

Boca Lighting and Controls · www.Boca.Lighting · Phone: 561-989-5338 · Fax: 561-982-8323

We are constantly improving our fixtures and reserve the right to change options and specifications. For specific requirements, contact your Boca Lighting and Controls sales representative. This product complies with IES LM-79-08 testing procedures and relevant standards. All products proudly manufactured in the USA. All rights reserved. All names and trademarks are property of their respective owners. © 2024 Boca Lighting and Controls

REV11122024