



HPNLS-HO-WD

Line Voltage Linear LED Strip
Fixture with Warm Dim



Customer: _____ Date: _____

Project: _____

Wattage	8W or 16W per linear ft.
Input Voltage	90-120V, 230-277V
Control	Forward/Reverse Phase Line Dimmer, 0-10V, DALI, DMX*
LED Spacing	1.5" on Center
Length	12", 24", 36", 48", 96"
Total Height	1.75" (not including clip)
Total Width	1.68"
Color Options	2700K, 3000K, 3500K, 4000K, 5000K
Mounting	Fixed, Swivel, Hinge, 3" Arc, or 6" Arc
Available Optics	10°, 30°, 60°, 10°x30°, 10°x60°, 30°x60°, 120°
Rating	IP50, IP67
CRI	90 + CRI
Power Cable	UL Standard 10 ft.
Dimming	Patented CleanDim® Technology ensures even dimming from 0-100%.
Finish	Black, White, Grey
Custom	Anodized Aluminum
Materials	Contact Factory
Max Run	40 ft. @ 120V (16W)
Environmental	Operating temperature: -40°F-140°F Ambient (-40°C-60°C)** Storage temperature: -40°F-140°F Ambient indoor fixtures operation limited to =<50% relative humidity

*Uses Boca SDS Module for 0-10V, DALI, or DMX Dimming.

** Military spec available under special request-lead times may be impacted.

PRODUCT SPECIFICATIONS:

	WATTAGE	COLOR OPTION	OPTIC	VOLTAGE	FINISH	LOCATION	MOUNTING
HPNLS-HO-WD	8W 16W	Low End Warm Dim 2000K-3000K *Standard Option - Select None for High End Warm Dim Custom CCT: *Select a CCT for both Low End and High End 2700K 4000K 3000K 5000K 3500K	High End 10° 30° 60° 10x30° 10°x60° 30°x60° 120°	120V 277V	W White B Black G Gray	I Interior-IP50 E Exterior IP67 N Natatorium*** K Extreme Environment IP69K ***Chromate Conversion with Marine Grade Powder Coat-IP67. Extra Charges may apply.	F Fixed S Swivel H Hinge 3Arc 3" Arc Swivel 6Arc 6" Arc Swivel V Vandal Resistant
LENS	BODY OPTIONS						
C Clear D Diffused SI Satin Ice (Interior Use Only) OP Opal White	SB Square Baffle ASYM Asymmetric Baffle SKB Kicker Baffle HL* Hexcell Louver (Cannot be used with Satin Ice White or 120° optic)						



HPNLS-HO-WD

Line Voltage Linear LED Strip
Fixture with Warm Dim



Customer: _____ Date: _____
Project: _____

Wattage	8W or 16W per linear ft.
Input Voltage	90-120V, 230-277V
Control	Forward/Reverse Phase Line Dimmer, 0-10V, DALI, DMX*
LED Spacing	1.5" on Center
Length	12", 18", 24", 36", 48", 96"
Total Height	1.75" (not including clip)
Total Width	1.68"
Color Options	2700K,3000K, 3500K, 4000K, 5000K
Mounting	Fixed, Swivel, Hinge, 3" Arc, or 6" Arc
Available Optics	10°, 30°, 60°, 10° x 60°, 30° x 60°, 120°
Rating	IP50, IP67
CRI	90 + CRI
Power Cable	UL Standard 10 ft.
Dimming	Patented CleanDim® Technology ensures even dimming from 0-100%.
Finish	Black, White, Grey
Custom	Anodized Aluminum
Materials	Contact Factory
Max Run	40 ft. @ 120V (16W)
Environmental	Operating temperature: -40°F-140°F Ambient(-40°C-60°C)** Storage temperature: -40°F-140°F Ambient indoor fixtures operation limited to =<50% relative humidity

*Uses Boca SDS Module for 0-10V, DALI, or DMX Dimming.
** Military spec available under special request-lead times may be impacted.

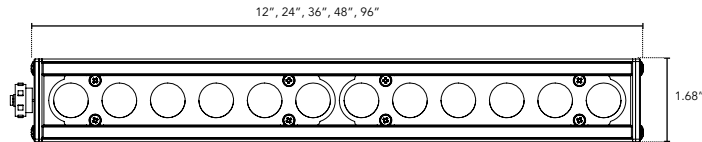
PRODUCT SPECIFICATIONS:

FIXTURE	WATTAGE	COLOR OPTION	OPTIC	VOLTAGE	FINISH	LOCATION	MOUNTING
HPNLS-HO-WD							
HPNLS-HO-WD	8W 16W	LOW END Warm Dim 2000K-3000K *Standard Option - Select NONE for High End Warm Dim Custom CCT: *Select a CCT for both Low End and High End 2700K 3000K 3500K 4000K 5000K	10° 30° 60° 10°x60° 30°x60° 120°	120V 277V	W White B Black G Gray	I Interior-IP50 E Exterior-IP67 K Extreme Environment-IP69K	F Fixed S Swivel H Hinge 3Arc 3" Arc Swivel 6Arc 6" Arc Swivel V Vandal Resistant

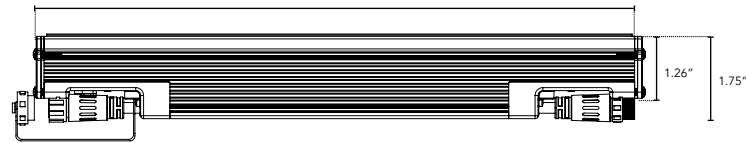
LENS	BODY OPTIONS
C Clear D Diffused OP Opal White	SB Square Baffle ASYM Asymmetric Baffle SKB Kicker Baffle HL* Hexcell Louver *(Cannot be used with Satin Ice White or 120° optic)

DIMENSIONS:

For vertical installation and installations above 4' please contact the factory for specific mounting instructions.



Plan View

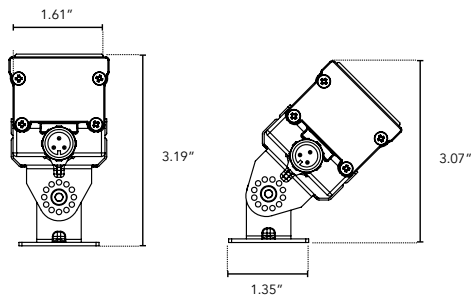


Elevation View

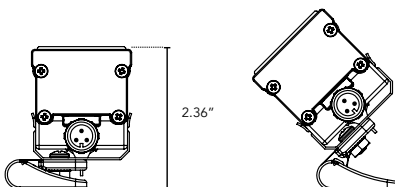
MOUNTING INFORMATION:

Note: Fixtures 1-2ft, Place clips 3" from edge as shown. Fixtures more than 2ft., Place clips 3.5" from edges as shown.

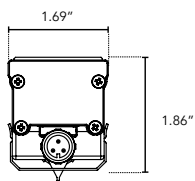
Swivel



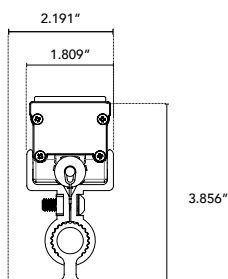
Hinge



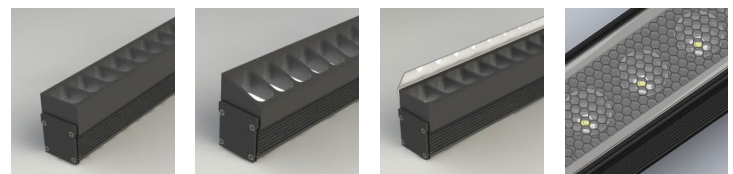
Fixed



Vandal Resistant



BAFFLE DETAILS:



SB

ASYM

SKB

HL

BAFFLE SQUARE - SB, ASYM, SKB

The design cuts off light at 90°, utilizing lightweight black PVC with non-reflective surfaces to avoid glare from interior sections. A one-piece baffle slides onto the extruded housing. The SB only adds 0.75" to the overall height, the ASYM adds 0.90" to the overall height, and the SKB adds 1.625" to the overall height.

HEXCELL LOUVER - HL

The louver cannot be utilized when no optic (120°) is specified. It is located flush to the secondary optic, preventing unwanted striation, and is positioned behind the lens to ensure no damage occurs during installation or afterward, also preventing dust build-up. The louver ships pre-fitted, making on-site fixture installation easy, with no unsightly clips, screws, or brackets. It can be used with other baffles and adds nothing to the overall height. Additional charges may apply.

LENS OPTIONS:

DIFFUSED GLASS

- 87% transmission
- Lens is 1/8" (.09) thick, adds 1/16" to overall height of fixture
- Additional charges apply

SATIN ICE

- Best for direct view use
- 42% transmission
- Lens is 1/4" (.25) thick, adds 1/8" to overall height of fixture
- Additional charges apply