



# HPNLS-HO-WD

Line Voltage Linear LED Strip  
Fixture with Warm Dim



Customer: \_\_\_\_\_ Date: \_\_\_\_\_

Project: \_\_\_\_\_

<b>Wattage</b>	8W or 16W per linear ft.
<b>Input Voltage</b>	90-120V, 230-277V
<b>Control</b>	Forward/Reverse Phase Line Dimmer, 0-10V, DALI, DMX*
<b>LED Spacing</b>	1.5" on Center
<b>Length</b>	12", 24", 36", 48", 96"
<b>Total Height</b>	1.75" (not including clip)
<b>Total Width</b>	1.68"
<b>Color Options</b>	2700K, 3000K, 3500K, 4000K, 5000K
<b>Mounting</b>	Fixed, Swivel, Hinge, 3" Arc, or 6" Arc
<b>Available Optics</b>	10°, 30°, 60°, 10°x30°, 10°x60°, 30°x60°, 120°
<b>Rating</b>	IP50, IP67
<b>CRI</b>	90 + CRI
<b>Power Cable</b>	UL Standard 10 ft.
<b>Dimming</b>	Patented CleanDim® Technology ensures even dimming from 0-100%.
<b>Finish</b>	Black, White, Grey
<b>Custom</b>	Anodized Aluminum
<b>Materials</b>	Contact Factory
<b>Max Run</b>	40 ft. @ 120V (16W)
<b>Environmental</b>	Operating temperature: -40°F-140°F Ambient(-40°C-60°C)** Storage temperature: -40°F-140°F Ambient indoor fixtures operation limited to =<50% relative humidity

\*Uses Boca SDS Module for 0-10V, DALI, or DMX Dimming.

\*\* Military spec available under special request-lead times may be impacted.

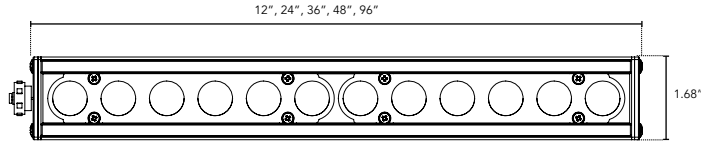


## PRODUCT SPECIFICATIONS:

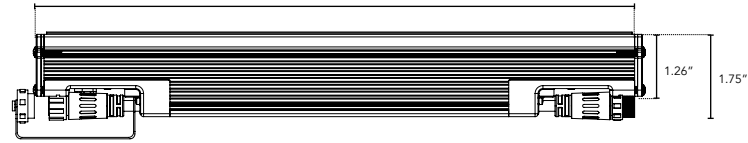
	WATTAGE	COLOR OPTION	OPTIC	VOLTAGE	FINISH	LOCATION	MOUNTING
<b>HPNLS-HO-WD</b>	<b>8W</b> <b>16W</b>	Low End <b>Warm Dim 2000K-3000K</b> *Standard Option - Select None for High End <b>Warm Dim Custom CCT:</b> *Select a CCT for both Low End and High End <b>2700K      4000K</b> <b>3000K      5000K</b> <b>3500K</b>	High End <b>10°</b> <b>30°</b> <b>60°</b> <b>10x30°</b> <b>10°x60°</b> <b>30°x60°</b> <b>120°</b>	<b>120V</b> <b>277V</b>	<b>W</b> White <b>B</b> Black <b>G</b> Gray	<b>I</b> Interior-IP50 <b>E</b> Exterior IP67 <b>K</b> Extreme Environment IP69K	<b>F</b> Fixed <b>S</b> Swivel <b>H</b> Hinge <b>3Arc</b> 3" Arc Swivel <b>6Arc</b> 6" Arc Swivel <b>V</b> Vandal Resistant
	LENS	BODY OPTIONS					
	<b>C</b> Clear <b>D</b> Diffused <b>SI</b> Satin Ice (Interior Use Only) <b>OP</b> Opal White	<b>SB</b> Square Baffle <b>ASYM</b> Asymmetric Baffle <b>SKB</b> Kicker Baffle <b>HL*</b> Hexcell Louver (Cannot be used with Satin Ice White or 120° optic)					

**DIMENSIONS:**

For vertical installation and installations above 4' please contact the factory for specific mounting instructions.



Plan View

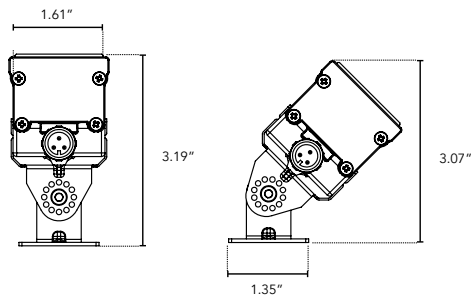


Elevation View

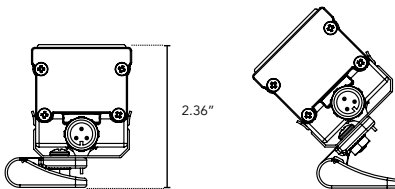
**MOUNTING INFORMATION:**

Note: Fixtures 1-2ft, Place clips 3" from edge as shown. Fixtures more than 2ft., Place clips 3.5" from edges as shown.

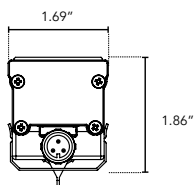
**Swivel**



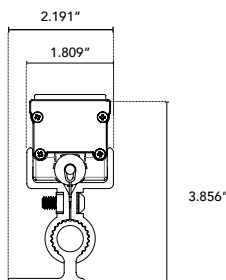
**Hinge**



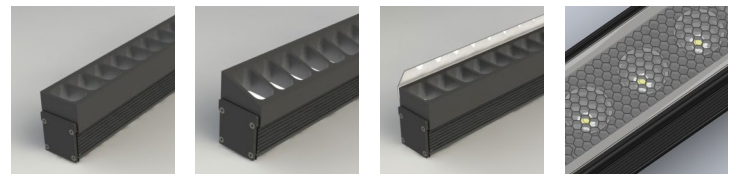
**Fixed**



**Vandal Resistant**



**BAFFLE DETAILS:**



SB ASYM SKB HL

**BAFFLE SQUARE - SB, ASYM, SKB**

The design cuts off light at 90°, utilizing lightweight black PVC with non-reflective surfaces to avoid glare from interior sections. A one-piece baffle slides onto the extruded housing. The SB only adds 0.75" to the overall height, the ASYM adds 0.90" to the overall height, and the SKB adds 1.625" to the overall height.

**HEXCELL LOUVER - HL**

The louver cannot be utilized when no optic (120°) is specified. It is located flush to the secondary optic, preventing unwanted striation, and is positioned behind the lens to ensure no damage occurs during installation or afterward, also preventing dust build-up. The louver ships pre-fitted, making on-site fixture installation easy, with no unsightly clips, screws, or brackets. It can be used with other baffles and adds nothing to the overall height. Additional charges may apply.

**LENS OPTIONS:**

**DIFFUSED GLASS**

- 87% transmission
- Lens is 1/8" (.09) thick, adds 1/16" to overall height of fixture
- Additional charges apply

**SATIN ICE**

- Best for direct view use
- 42% transmission
- Lens is 1/4" (.25) thick, adds 1/8" to overall height of fixture
- Additional charges apply