



HPNLS-RT

Low Voltage Linear LED Strip Fixture



Customer: _____ Date: _____

Project: _____

| | |
|-------------------------|---|
| Wattage | 8W per linear ft. |
| Input Voltage | 12-48 VAC |
| Control | Standard magnetic low voltage dimming - AC only. Forward/Reverse Phase Line Dimmer, 0-10V, DALI, DMX* |
| LED Spacing | 1.5" on Center |
| Length | 12", 18", 24", 36", 48", 96". Allow 1/4" for each end cap and 2" for power feed cable. |
| Total Height | 1.75" (not including clip) |
| Total Width | 1.68" |
| Color Options | 2700K, 3000K, 3500K, 4000K, 5000K, Amber, Red, Green, Blue |
| Mounting | Fixed, Swivel, 3" Arc or 6" Arc |
| Available Optics | 10°, 30°, 60°, 10°x60°, 30°x60°, 120° |
| Rating | IP50, IP67, IP69K |
| CRI | 90+ CRI |
| Power Cable | UL Standard 10 ft. |
| Finish | Black, White, Grey |
| Materials | Anodized Aluminum |
| Custom | Contact Factory |
| Dimming | Patented CleanDim® Technology ensures even dimming from 0-100%. |
| Max Run | Voltage Dependent (Class 2 Limited) |
| Environmental | Operating temperature: -40°F-140°F Ambient (-40°C-60°C)** Storage temperature: -40°F-140°F Ambient indoor fixtures operation limited to <=50% relative humidity |

** Military spec available under special request-lead times may be impacted.

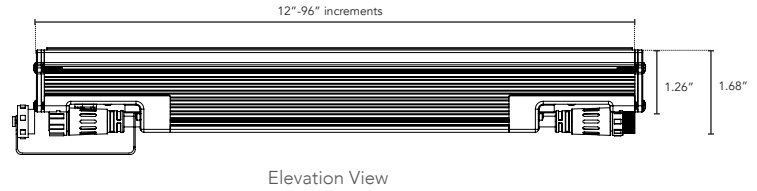
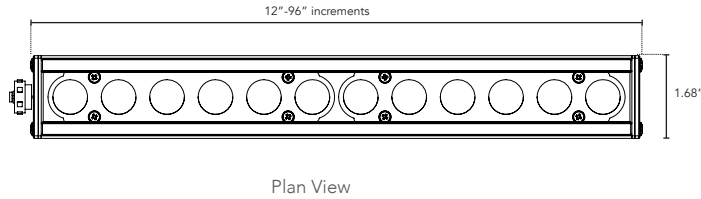


PRODUCT SPECIFICATIONS:

| | | COLOR OPTION | OPTIC | VOLTAGE | FINISH | LOCATION | MOUNTING | LENS | OPTIONS |
|--------------|-----------|--------------|----------------|---|----------------|------------------------------------|---------------------------|--|--|
| HPNLS | RT | 2700K | 10° | 120V | W White | I Interior-IP50 | F Fixed | C Clear | SB Square Baffle |
| | | 3000K | 30° | 277V | B Black | E Exterior-IP67 | S Swivel | D Diffused | ASYM Asymmetric Baffle |
| | | 3500K | 60° | | G Gray | K Extreme Environment-IP69K | 3Arc 3" Arc Swivel | SI Satin Ice (Interior Use Only) | SKB Kicker Baffle |
| | | 4000K | 10°x60° | Fixture is 12-48VAC | | | 6Arc 6" Arc Swivel | V Vandal Resistant | HL Hexcell Louver (Cannot be used with Satin Ice White or 120° optic) |
| | | 5000K | 30°x60° | | | | | OW Opal White (Exterior Use Only) | |
| | | Amber | 120° | | | | | | |
| | | Red | | *If ordering 17VDC fixture, note here and contact factory | | | | | |
| | | Green | | | | | | | |
| | | Blue | | | | | | | |

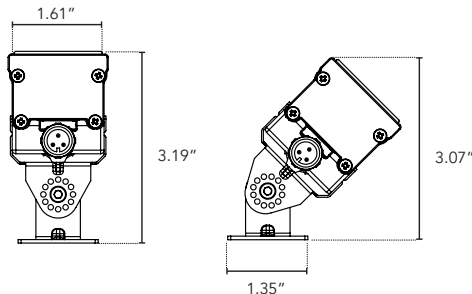
DIMENSIONS:

For vertical installation and installations above 4' please contact the factory for specific mounting instructions.

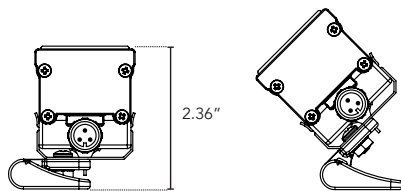


MOUNTING INFORMATION:

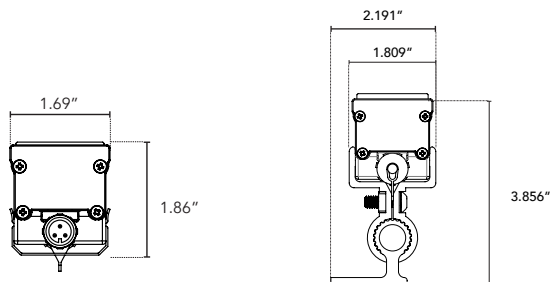
Note: Fixtures 1-2ft, Place clips 3" from edge as shown. Fixtures more than 2ft., Place clips 3.5" from edges as shown.



Swivel



Hinge



Fixed

Vandal Resistant

LENS OPTIONS:

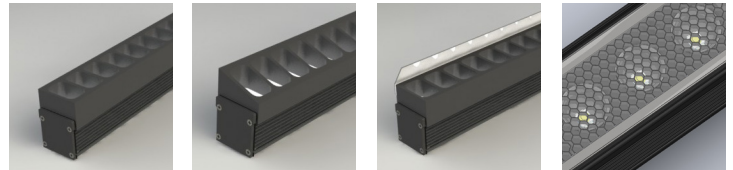
DIFFUSED GLASS

- 87% transmission
- Lens is 1/8" (.09) thick, adds 1/16" to overall height of fixture
- Additional charges apply

SATIN ICE

- Best for direct view use. Interior use only.
- 42% transmission
- Lens is 1/4" (.25) thick, adds 1/8" to overall height of fixture
- Additional charges apply

BAFFLE DETAILS:



SB

ASYM

SKB

HL

BAFFLE SQUARE - SB, ASYM, SKB

The design cuts off light at 90°, utilizing lightweight black PVC with non-reflective surfaces to avoid glare from interior sections. A one-piece baffle slides onto the extruded housing. The SB only adds 0.75" to the overall height, the ASYM adds 0.90" to the overall height, and the SKB adds 1.625" to the overall height.

HEXCELL LOUVER - HL

The louver cannot be utilized when no optic (120°) is specified. It is located flush to the secondary optic, preventing unwanted striation, and is positioned behind the lens to ensure no damage occurs during installation or afterward, also preventing dust build-up. The louver ships pre-fitted, making on-site fixture installation easy, with no unsightly clips, screws, or brackets. It can be used with other baffles and adds nothing to the overall height. Additional charges may apply.