



INTRODUCTION:

The Boca HP-Submersible is designed for submersible installations where light output is a concern. It offers seamless LED configuration and easy installation. The Submersible can be used with any magnetic low voltage dimmer. The housing is a clear durable and heat resistant polycarbonate tube with Teflon coated end-caps, ensuring longevity even in the harshest underwater environments. It is UL Listed for wet location. See layout drawings for model provided.

ELECTRICAL SPECIFICATIONS:

1. Input Voltage: 24 VDC
2. Total linear ft per 20A breaker: 160ft
3. Total linear ft per 15A breaker: 120ft
4. Input Current: 410mA RMS per linear ft

Fixtures must be installed by a qualified and licensed electrician in accordance with all national, state and local electrical codes and regulations. If any part of this manual does not meet the necessary codes and regulations, contact the factory for more information before attempting to install.

MAINTENANCE:

Storage:

Store in a dry, well-ventilated area when product is not in use. Keep the electrical cord away from heated surfaces when in use or not in use. If cord shows signs of damage do not use, return product to manufacturer.

Cleaning:

Exterior (IP67) Rated Fixtures:
To clean surface use a soft cloth with mild soap and water.

WARNING: DO NOT LIFT FIXTURE BY CABLES. Do not attempt to install or use the HPSUB fixture without reading the installation instructions and safety labels completely.

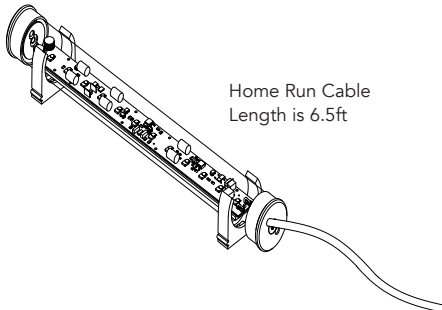
This could result in permanent damage to both the fixture and the cables. Damage resulting from grasping cables and/or putting undue pressure on the cable connections will not be covered under the warranty!

FAILURE TO ADHERE TO THESE INSTRUCTIONS COULD RESULT IN SERIOUS INJURY OR PROPERTY DAMAGE. DO NOT MODIFY, ALTER OR ATTEMPT TO SERVICE THE HPSUB DOING SO WILL VOID THE WARRANTY.

TURN POWER OFF AT CIRCUIT BREAKER BEFORE BEGINNING INSTALLATION!

INCLUDED IN THE PACKAGE:

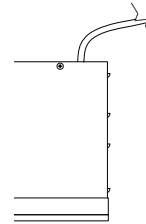
1. HP-SUBMERSIBLE Fixture (In lengths shown on job specific drawings)



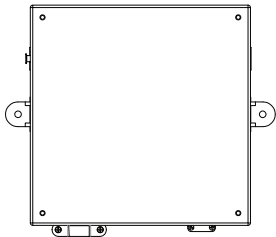
2. Mounting Brackets (2 brackets per fixture)



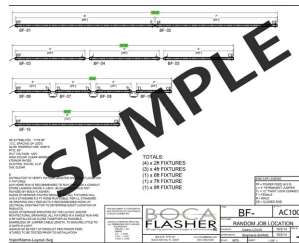
3. Remote Transformers (If ordered)



4. I.M.C.S. Distribution Box (If ordered)

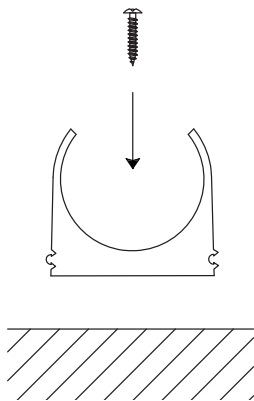


5. Job Specific Drawings

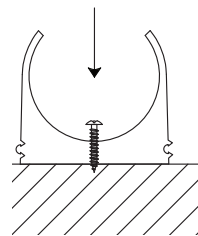


1: INSTALL CLIPS INTO SUBSTRATE

1a



1b



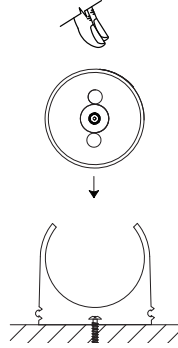
Screw Information:

1. Screws not provided by Boca Flasher.
2. For Underwater Tube Boca Flasher recommends wide washer flat head Philips #8 screw.
3. Length of screw will vary depending on mounting surface.
4. For outdoor installations, installer should use a screw with weatherproof coating.

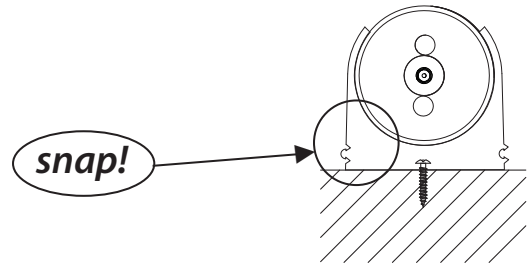
*For vertical installation, please contact the factory for specific mounting instructions.

2. INSTALL FIXTURES INTO CLIPS

2a Push Fixture down with slightly firm pressure.

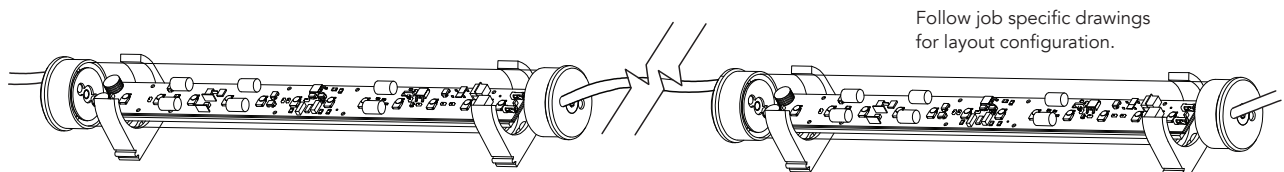


2b Clip will securely snap into place.



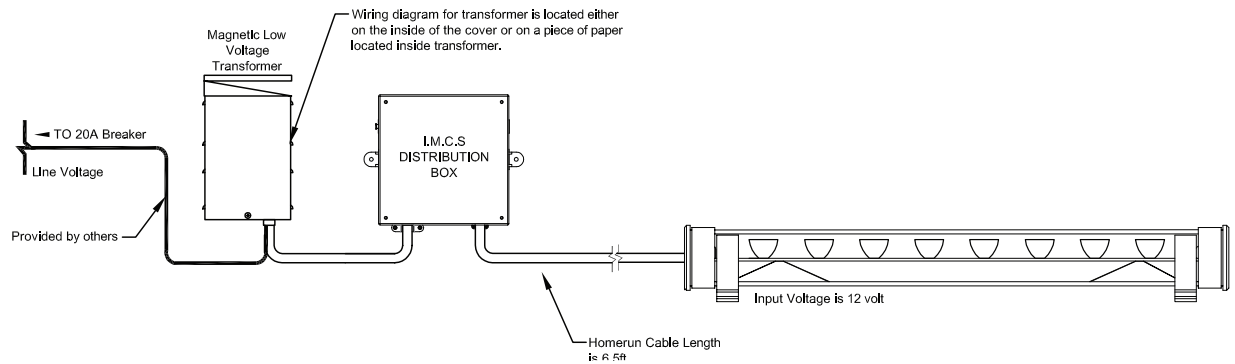
3. CONNECT FIXTURES TOGETHER

(As Shown on Job Specific Drawings) NOTE: Underwater Tube ships connected.

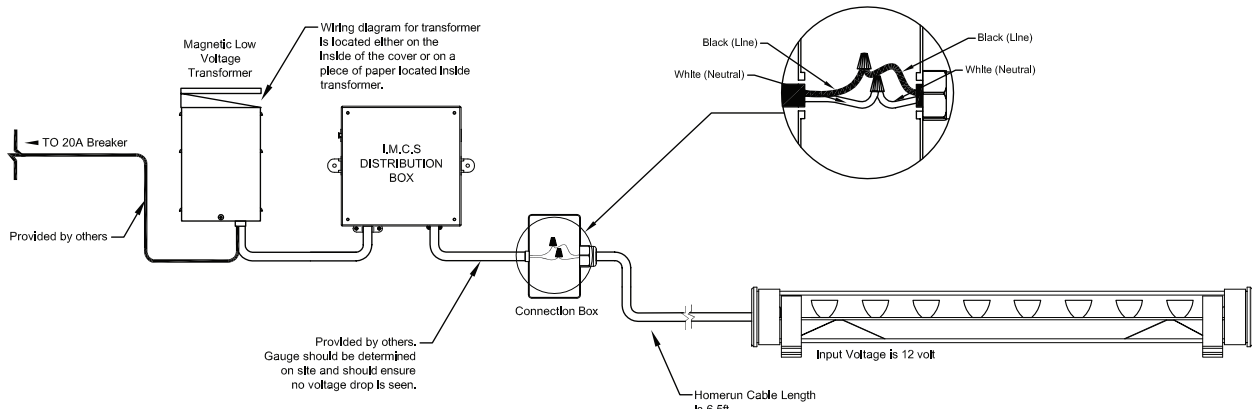


4. CONNECT FIXTURES TO POWER

Recommended Install - Option 1

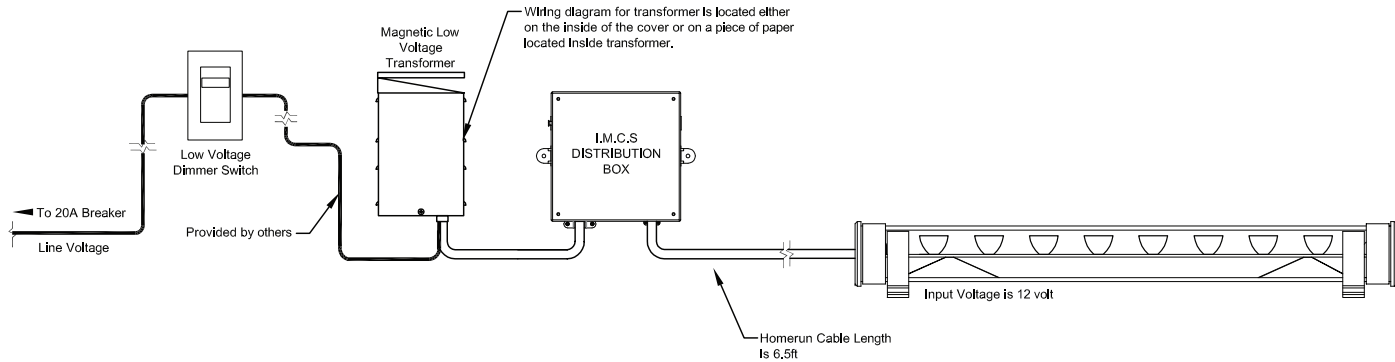


Recommended Install - Option 2



5. CONNECT FIXTURE TO A DIMMING SYSTEM

*Submersible Cable - Nicks or Cuts will breach cable/fixture.



1. DANGER:

To reduce the risk electric shock, always unplug the HPSUB from electrical outlet before cleaning. Cut breaker if outlet is not available.

2. To reduce the risk of burns, fire, electric shock or injury to persons:

- Use the HPSUB only for its intended use as described in these instructions.
- Do not use attachments not recommended by Boca Lighting and Controls.
- Never operate the HPSUB if it has a damaged cord, cable or plug, if it is not working properly, if it has been dropped or damaged, or dropped into water. If the seal appears to be damaged/broken/torn return the fixture to a service center for examination or repair.
- Keep cables away from heated surfaces
- Never drop or insert any object into any opening.
- Do not operate where aerosol (spray) products are being used or where oxygen is being administered.

3. WARNING:

- Do not attempt to install or use the HPSUB without reading the installation instructions and safety labels.
- Failure to adhere to these instructions could result in serious injury or property damage.

4. Do not modify, alter or attempt to service the HPSUB:

- Doing so will void the warranty.

5. There are no serviceable parts within the HPSUB:

- Please contact your local representative if issues arise on site during or after installation.

6. Do not use sharp tools near or on the fixture lens:

- Doing so will result in property damage and void the warranty.