



# HPNLS-LO

Line Voltage Linear LED Strip Fixture

Customer: \_\_\_\_\_ Date: \_\_\_\_\_

Project: \_\_\_\_\_



<b>Wattage</b>	5W, 8W, or 10W per linear ft.
<b>Input Voltage</b>	90-120V, 230-277V
<b>Control</b>	Forward/Reverse Phase Line Dimmer 0-10V, DMX*
<b>LED Spacing</b>	1.5" on Center
<b>Length</b>	12"-96", 6" increments - 12" minimum
<b>Total Height</b>	1.75" (not including clip)
<b>Total Width</b>	1.68"
<b>Color Options</b>	2700K, 3000K, 3500K, 4000K, 5000K, Amber, Red, Green, Blue
<b>Mounting</b>	Fixed, Swivel, Hinge, 3" Arc, 6" Arc or Vandal Resistant
<b>Available Optics</b>	10°, 30°, 60°, 10°x60°, 30°x60°, 120°
<b>Rating</b>	IP50, IP67, IP69K
<b>CRI</b>	90+ CRI
<b>Power Cable</b>	UL Standard 10 ft.
<b>Finish</b>	Black, White, Grey
<b>Material</b>	Anodized Aluminum
<b>Custom</b>	Contact Factory
<b>Dimming</b>	Patented CleanDim® Technology ensures even dimming from 0-100%.
<b>Environmental</b>	Operating temperature: -40°F-140°F Ambient(-40°C-60°C)** Storage temperature -40°F-140°F Ambient indoor fixtures operation limited to =<50% relative humidity

\*Uses Boca SDS Module for 0-10V, DALI, or DMX Dimming.

\*\* Military spec available under special request-lead times may be impacted.

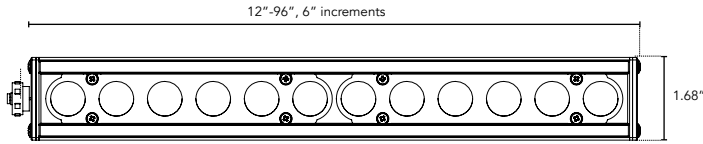


## PRODUCT SPECIFICATIONS:

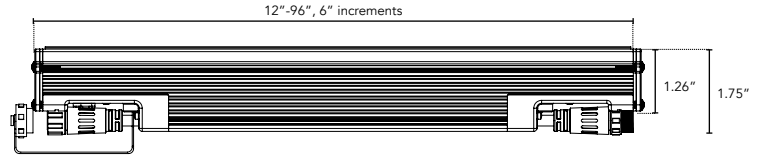
	WATTAGE	COLOR OPTION	OPTIC	VOLTAGE	FINISH	LOCATION	MOUNTING	LENS	OPTIONS
<b>HPNLS</b>	<b>LO8 5W/FT</b> <b>LO8 8W/FT</b> <b>LO8 10W/FT</b>	<b>2700K</b> <b>3000K</b> <b>3500K</b> <b>4000K</b> <b>5000K</b> <b>Amber</b> <b>Red</b> <b>Green</b> <b>Blue</b>	<b>10°</b> <b>30°</b> <b>60°</b> <b>10°x60°</b> <b>30°x60°</b> <b>120°</b>	<b>120V</b> <b>277V</b>	<b>W</b> White <b>B</b> Black <b>G</b> Gray	<b>I</b> Interior-IP50 <b>E</b> Exterior-IP67 <b>K</b> Extreme Environment - IP69K	<b>F</b> Fixed <b>H</b> Hinge <b>3Arc</b> 3" Arc Swivel <b>6Arc</b> 6" Arc Swivel <b>V</b> Vandal Resistant	<b>C</b> Clear <b>D</b> Diffused <b>SI</b> Satin Ice (Interior Use Only) <b>OP</b> Opal White	<b>SB</b> Square Baffle <b>ASYM</b> Asymmetric Baffle <b>SKB</b> Kicker Baffle <b>HL</b> Hexcell Louver*  *Cannot be used with Satin Ice White or 120° optic

**DIMENSIONS:**

For vertical installation and installations above 4' please contact the factory for specific mounting instructions.



Plan View

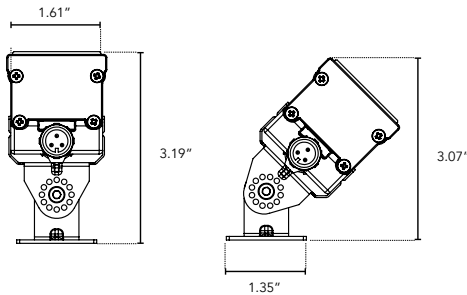


Elevation View

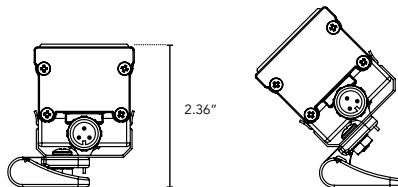
**MOUNTING INFORMATION:**

Note: Fixtures 1-2ft, Place clips 3" from edge as shown. Fixtures more than 2ft., Place clips 3.5" from edges as shown.

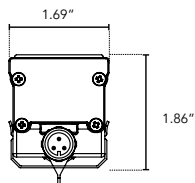
**Swivel**



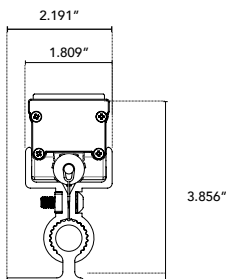
**Hinge**



**Fixed**



**Vandal Resistant**



**LENS OPTIONS:**

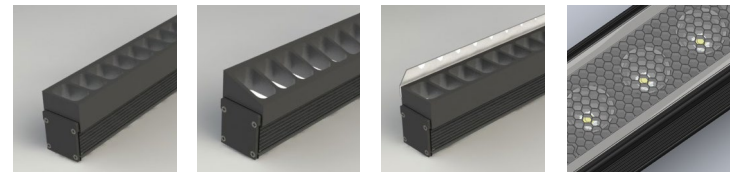
**DIFFUSED GLASS**

- 87% transmission
- Lens is 1/8" (.09) thick, adds 1/16" to overall height of fixture
- Additional charges apply

**SATIN ICE WHITE**

- Best for direct view use. Interior use only.
- 42% transmission
- Lens is 1/4" (.25) thick, adds 1/8" to overall height of fixture
- Additional charges apply

**BAFFLE DETAILS:**



SB

ASYM

SKB

HL

**BAFFLE SQUARE - SB, ASYM, SKB**

The design cuts off light at 90°, utilizing lightweight black PVC with non-reflective surfaces to avoid glare from interior sections. A one-piece baffle slides onto the extruded housing. The SB only adds 0.75" to the overall height, the ASYM adds 0.90" to the overall height, and the SKB adds 1.625" to the overall height.

**HEXCELL LOUVER - HL**

The louver cannot be utilized when no optic (120°) is specified. It is located flush to the secondary optic, preventing unwanted striation, and is positioned behind the lens to ensure no damage occurs during installation or afterward, also preventing dust build-up. The louver ships pre-fitted, making on-site fixture installation easy, with no unsightly clips, screws, or brackets. It can be used with other baffles and adds nothing to the overall height. Additional charges may apply.

**LUMINAIRE INFORMATION:**

<b>Fixture Type</b>	3500°K, 30x60° Optic, 120V, 12"
<b>Lumens Per Lamp</b>	936 (1 lamp)
<b>Total Lamp Lumens</b>	936
<b>Luminaire Lumens</b>	936
<b>Total Luminaire Efficiency</b>	100%
<b>Lumen Efficacy Rating</b>	94
<b>Total Luminaire Watts</b>	10.02
<b>Ballast Factor</b>	1.00
<b>CIE Type</b>	Direct
<b>Spacing Criterion (0-180)</b>	0.58
<b>Spacing Criterion (90-270)</b>	0.62
<b>Spacing Criterion (Diagonal)</b>	0.60
<b>Basic Luminous Shape</b>	Rectangular
<b>Luminous Length (0-180)</b>	0.31m
<b>Luminous Width (90-270)</b>	0.04m
<b>Luminous Height</b>	0.05m

Lo8 Data - 10W for 6W use 0.65 multiplier  
Specific Files Available On Request