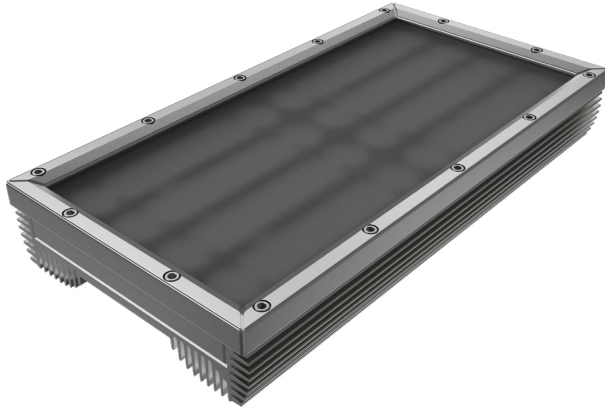




# SBL-MC

High Intensity Solid Color LED Fixture



Customer: \_\_\_\_\_ Date: \_\_\_\_\_

Project: \_\_\_\_\_

<b>Wattage</b>	48W per linear ft.
<b>Input Voltage</b>	120V, 277V
<b>Control</b>	Leading Edge/Trailing Edge Line Dimmer 0-10V, DALI or DMX**
<b>LED Spacing</b>	1"x1.5" on Center
<b>Length</b>	1ft., 2 ft., 4 ft.
<b>Total Height</b>	2.62"
<b>Total Width</b>	6.74"
<b>Color Options</b>	2700K, 3000K, 3500K, 4000K, 5000K, Amber, Red, Green, Blue
<b>Mounting</b>	Fixed, Swivel
<b>Available Optics</b>	10°, 30°, 60°, 10°x30°, 10°x60°, 30°x60°, 120°
<b>Rating</b>	IP50, IP67, IP69K
<b>CRI</b>	90+ CRI
<b>Power Cable</b>	UL Standard 10 ft.
<b>Finish</b>	Black, White, Grey
<b>Material</b>	Anodized Aluminum
<b>Custom</b>	Contact Factory
<b>Dimming</b>	Patented CleanDim® Technology ensures even dimming from 0-100%.
<b>Environmental</b>	Operating temperature: -40°F-140°F Ambient(-40°C-60°C)*** Storage temperature: -40°F-140°F Ambient indoor fixtures operation limited to =<50% relative humidity

\*\* Use Boca SDS module for 0-10V or DMX Dimming.

\*\*\* Military spec available under special request-lead times may be impacted.

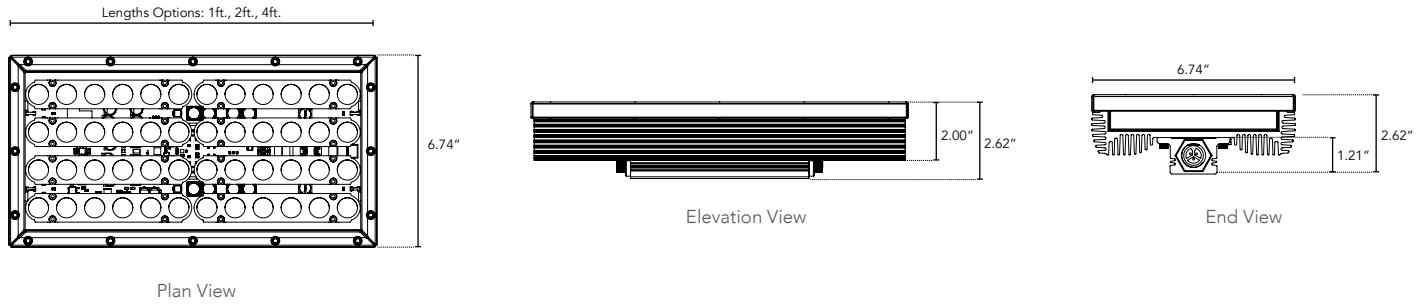


\* Contact factory for Extreme Environment Installations.

## PRODUCT SPECIFICATIONS:

		COLOR OPTION	OPTIC	VOLTAGE	FINISH	LOCATION	MOUNTING	OPTION
<b>SBL</b>	<b>MC</b>				<b>A</b>			
		2700K	10°	120V	<b>A</b> Clear Anodized Aluminum	<b>I</b> Interior-IP50	<b>F</b> Fixed	
		3000K	30°	277V				
		3500K	60°					
		4000K	10°x30°					
		5000K	10°x60°					
		Amber	30°x60°					
		Red	120°					
		Green						
		Blue						

**DIMENSIONS:**



**MOUNTING INFORMATION:**

For vertical installation and installations above 4' please contact the factory for specific mounting instructions.

