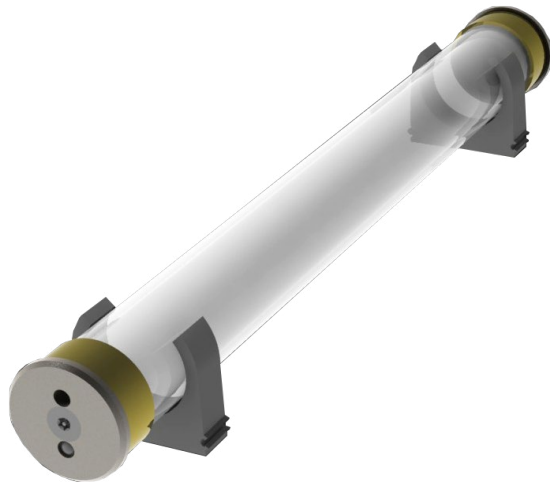




# UW-TUBE

Fully Submersible Underwater Tube



Customer: \_\_\_\_\_ Date: \_\_\_\_\_

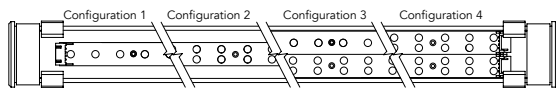
Project: \_\_\_\_\_

<b>Input Voltage</b>	24VAC or 24VDC
<b>Wattage</b>	Varies based on product and configuration.
<b>Power CBL Length</b>	Variable
<b>Mounting</b>	Fixed
<b>Height</b>	2.10" without lips
<b>Tube Length</b>	15" - 99" in 4" or 9" increments (model dependent)
<b>Total Diameter</b>	1.5"
<b>Clip Width</b>	2.36"
<b>Rating</b>	IP50, IP67
<b>Environmental</b>	Operating temperature: -40°F-140°F Ambient(-40°C-60°C)** Storage temperature: -40°F-140°F Ambient indoor fixtures operation limited to =<50% relative humidity

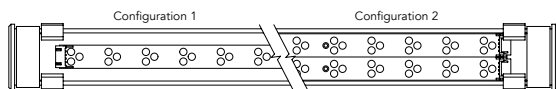
\*\* Military spec available under special request-lead times may be impacted.



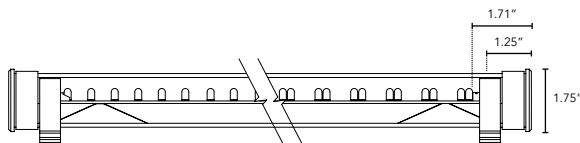
## DIMENSIONS:



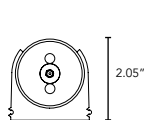
Plan View (AC-100)



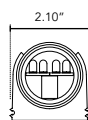
Plan View (CCS-100)



Elevation View

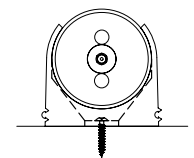


End Cap



Section In Tube

## MOUNTING INFORMATION:



Fixed

## PRODUCT SPECIFICATIONS:

To specify with one board add "UW1" in the option box when specifying the AC100 or CSS-100 product.

To specify with two boards mounted side by side (as shown), add "UW2" in the option box when specifying the AC100 or CSS-100 product.