



HPNLS-HO

Line Voltage Linear LED Strip Fixture



Customer: _____ Date: _____

Project: _____

Wattage	5W (ASHRAE) or 8W or 16W per linear ft.
Input Voltage	90-120V, 230-277V
Control	Forward/Reverse Phase Line Dimmer, 0-10V, DALI, DMX*
LED Spacing	1" on Center
Length	12", 18", 24", 36", 48", 96"
Total Height	1.75" (not including clip)
Total Width	1.68"
Color Options	2700K, 3000K, 3500K, 4000K, 5000K, Amber, Red, Green, Blue
Mounting	Fixed, Swivel, Hinge, 3" Arc, 6" Arc or Vandal Resistant
Available Optics	10°, 30°, 60°, 10° x 60°, 30° x 60°, 120°
Rating	IP50, IP67, IP69K
CRI	90+ CRI
Power Cable	UL Standard 10 ft.
Finish	Black, White, Grey
Materials	Anodized Aluminum
Custom	Contact Factory
Dimming	Patented CleanDim® Technology ensures even dimming from 0-100%.
Max Run	40ft @ 120V (16W)
Environmental	Operating temperature: -40°F-140°F Ambient(-40°C-60°C)** Storage temperature: -40°F-140°F Ambient indoor fixtures operation limited to =<50% relative humidity

*Uses Boca SDS Module for 0-10V, Dali, or DMX Dimming.

** Military spec available under special request-lead times may be impacted.

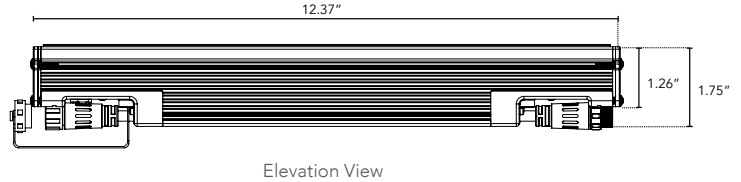
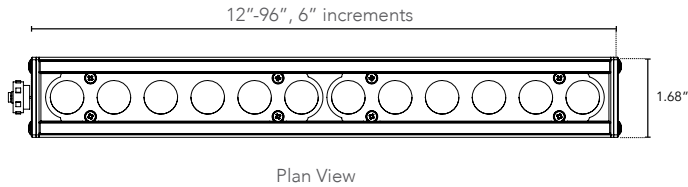


PRODUCT SPECIFICATIONS:

	WATTAGE	COLOR OPTION	OPTIC	VOLTAGE	FINISH	LOCATION	MOUNTING	LENS	BODY OPTIONS
HPNLS-HO									
	5W ASHRAE	2700K	10°	120V	W White	I Interior-IP50	F Fixed	C Clear	SB Square Baffle
	8W	3000K	30°	277V	B Black	E Exterior-IP67	S Swivel	D Diffused	ASYM Asymmetric Baffle
	16W	3500K	60°		G Gray	K IP69K-Extreme Environment	H Hinge	SI Satin Ice (Interior Use Only)	SKB Kicker Baffle
		4000K	10°x60°				3Arc 3" Arc Swivel	OP Opal White	HL* Hexcell Louver (Cannot be used with Satin Ice White or 120° optic)
		5000K	30°x60°				6Arc 6" Arc Swivel		
		Amber	120°				V Vandal Proof Clip		
		Red							
		Green							
		Blue							

DIMENSIONS:

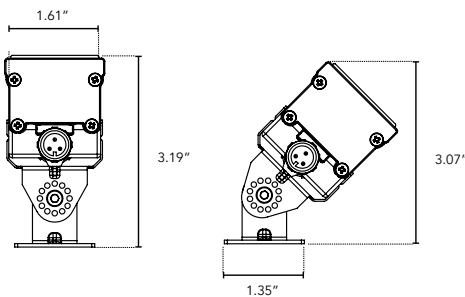
For vertical installation and installations above 4' please contact the factory for specific mounting instructions.



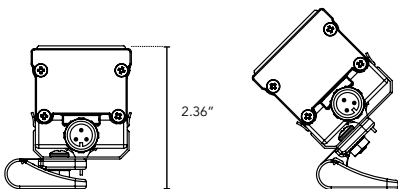
MOUNTING INFORMATION:

Note: Fixtures 1-2ft, Place clips 3" from edge as shown. Fixtures more than 2ft., Place clips 3.5" from edges as shown.

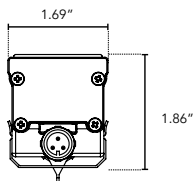
Swivel



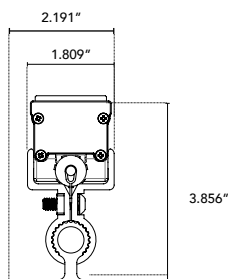
Hinge



Fixed



Vandal Resistant



LENS OPTIONS:

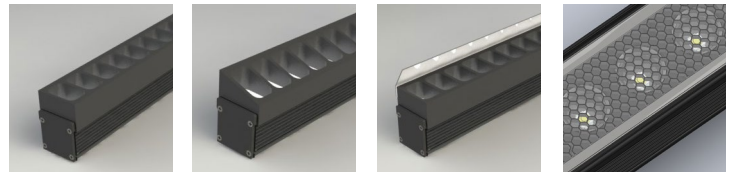
DIFFUSED GLASS

- 87% transmission
- Lens is 1/8" (.09) thick, adds 1/16" to overall height of fixture
- Additional charges apply

SATIN ICE

- Best for direct view use. Interior only.
- 42% transmission
- Lens is 1/4" (.25) thick, adds 1/8" to overall height of fixture
- Additional charges apply

BAFFLE DETAILS:



SB

ASYM

SKB

HL

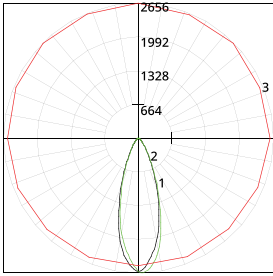
BAFFLE SQUARE - SB, ASYM, SKB

The design cuts off light at 90°, utilizing lightweight black PVC with non-reflective surfaces to avoid glare from interior sections. A one-piece baffle slides onto the extruded housing. The SB only adds 0.75" to the overall height, the ASYM adds 0.90" to the overall height, and the SKB adds 1.625" to the overall height.

HEXCELL LOUVER - HL

The louver cannot be utilized when no optic (120°) is specified. It is located flush to the secondary optic, preventing unwanted striation, and is positioned behind the lens to ensure no damage occurs during installation or afterward, also preventing dust build-up. The louver ships pre-fitted, making on-site fixture installation easy, with no unsightly clips, screws, or brackets. It can be used with other baffles and adds nothing to the overall height. Additional charges may apply.

LUMINAIRE INFORMATION:



Fixture Type: 3500°K, 24° optic, 120V, 12”
 Total lumen Output: 4840 Lumens per 4ft.
 Luminaire Efficacy: 80.6 Lumens per watt
 Maximum Candela: 2655.83
 Located at Horizontal Angle: 90
 Vertical Angle: 2

LUMENS PER LAMP	1203.5 (1 lamp)
TOTAL LAMP LUMENS	1203.5
LUMINAIRE LUMENS	1204
TOTAL LUMINAIRE EFFICIENCY	100%
LUMEN EFFICACY RATING	80
TOTAL LUMINAIRE WATTS	15.02
BALLAST FACTOR	1.00
CIE TYPE	Direct
SPACING CRITERION (0-180)	0.58
SPACING CRITERION (90-270)	0.62
SPACING CRITERION (Diagonal)	0.60
BASIC LUMINOUS SHAPE	Rectangular
LUMINOUS LENGTH (0-180)	0.31m
LUMINOUS WIDTH (90-270)	0.04m
LUMINOUS HEIGHT	0.00m

#1 - Vertical Plane Through Horizontal Angles (0 - 180)

#2 - Vertical Plane Through Horizontal Angles (90 - 270)

#3 - Horizontal Cone Through Vertical Angle (2) (Through Max. Cd.)

For lux multiply fc by 10.76fc reading taken at 100% capacity (no dimming)

	Optic Angle(*)	10	30	60	10x60	30x60	D	SB-C(10°)	SB-D(10°)	ASYM-C(10°)	ASYM-D(10°)	HL-C(10°)	HL-D(10°)	OW(10°)	K(10°)
CCT	2200	x0.93	x0.93	x0.93	x0.93	x0.93	x0.93	x0.93	x0.93	x0.93	x0.93	x0.93	x0.93	x0.93	x0.93
CCT	2400	x0.93	x0.93	x0.93	x0.93	x0.93	x0.93	x0.93	x0.93	x0.93	x0.93	x0.93	x0.93	x0.93	x0.93
CCT	2700	x0.96	x0.96	x0.96	x0.96	x0.96	x0.96	x0.96	x0.96	x0.96	x0.96	x0.96	x0.96	x0.96	x0.96
CCT	3000	x0.98	x0.98	x0.98	x0.98	x0.98	x0.98	x0.98	x0.98	x0.98	x0.98	x0.98	x0.98	x0.98	x0.98
CCT	3500	1416	1332	1286	1225	1157	1247	1272	1120	1267	1110	1189	1046	725	1315
CCT	4000	x1.15	x1.15	x1.15	x1.15	x1.15	x1.15	x1.15	x1.15	x1.15	x1.15	x1.15	x1.15	x1.15	x1.15
CCT	5000	x1.32	x1.32	x1.32	x1.32	x1.32	x1.32	x1.32	x1.32	x1.32	x1.32	x1.32	x1.32	x1.32	x1.32
	5W	x0.36	x0.36	x0.36	x0.36	x0.36	x0.36	x0.36	x0.36	x0.36	x0.36	x0.36	x0.36	x0.36	x0.36
	8W	x0.55	x0.55	x0.55	x0.55	x0.55	x0.55	x0.55	x0.55	x0.55	x0.55	x0.55	x0.55	x0.55	x0.55
	10W	x0.62	x0.62	x0.62	x0.62	x0.62	x0.62	x0.62	x0.62	x0.62	x0.62	x0.62	x0.62	x0.62	x0.62