



# HPNLS-HO

Line Voltage Linear LED Strip Fixture



Customer: \_\_\_\_\_ Date: \_\_\_\_\_

Project: \_\_\_\_\_

<b>Wattage</b>	5W (ASHRAE) or 8W or 16W per linear ft.
<b>Input Voltage</b>	90-120V, 230-277V
<b>Control</b>	Forward/Reverse Phase Line Dimmer, 0-10V, DALI, DMX*
<b>LED Spacing</b>	1" on Center
<b>Length</b>	12"-96", 6" increments
<b>Total Height</b>	1.75" (not including clip)
<b>Total Width</b>	1.68"
<b>Color Options</b>	2700K, 3000K, 3500K, 4000K, 5000K, Amber, Red, Green, Blue
<b>Mounting</b>	Fixed, Swivel, Hinge, 3" Arc, 6" Arc or Vandal Resistant
<b>Available Optics</b>	10°, 30°, 60°, 10° x 60°, 30° x 60°, 120°
<b>Rating</b>	IP50, IP67, IP69K
<b>CRI</b>	90+ CRI
<b>Power Cable</b>	UL Standard 10 ft.
<b>Finish</b>	Black, White, Grey
<b>Materials</b>	Anodized Aluminum
<b>Custom</b>	Contact Factory
<b>Dimming</b>	Patented CleanDim® Technology ensures even dimming from 0-100%.
<b>Max Run</b>	40ft @ 120V (16W)
<b>Environmental</b>	Operating temperature: -40°F-140°F Ambient(-40°C-60°C)** Storage temperature: -40°F-140°F Ambient indoor fixtures operation limited to =<50% relative humidity

\*Uses Boca SDS Module for 0-10V, Dali, or DMX Dimming.

\*\* Military spec available under special request-lead times may be impacted.

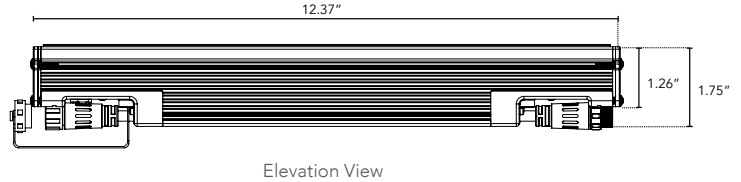
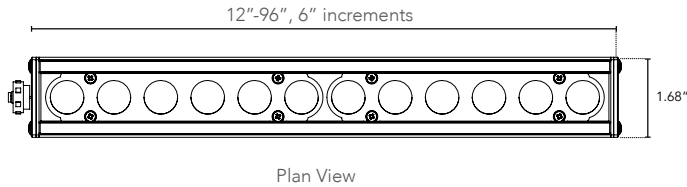


## PRODUCT SPECIFICATIONS:

	WATTAGE	COLOR OPTION	OPTIC	VOLTAGE	FINISH	LOCATION	MOUNTING	LENS	BODY OPTIONS
<b>HPNLS-HO</b>									
	<b>5W</b> ASHRAE	<b>2700K</b>	<b>10°</b>	<b>120V</b>	<b>W</b> White	<b>I</b> Interior-IP50	<b>F</b> Fixed	<b>C</b> Clear	<b>SB</b> Square Baffle
	<b>8W</b>	<b>3000K</b>	<b>30°</b>	<b>277V</b>	<b>B</b> Black	<b>E</b> Exterior-IP67	<b>S</b> Swivel	<b>D</b> Diffused	<b>ASYM</b> Asymmetric Baffle
	<b>16W</b>	<b>3500K</b>	<b>60°</b>		<b>G</b> Gray	<b>K</b> IP69K-Extreme Environment	<b>H</b> Hinge	<b>SI</b> Satin Ice (Interior Use Only)	<b>SKB</b> Kicker Baffle
		<b>4000K</b>	<b>10°x60°</b>				<b>3Arc</b> 3" Arc Swivel	<b>OP</b> Opal White	<b>HL*</b> Hexcell Louver (Cannot be used with Satin Ice White or 120° optic)
		<b>5000K</b>	<b>30°x60°</b>				<b>6Arc</b> 6" Arc Swivel		
		<b>Amber</b>	<b>120°</b>				<b>V</b> Vandal Proof Clip		
		<b>Red</b>							
		<b>Green</b>							
		<b>Blue</b>							

**DIMENSIONS:**

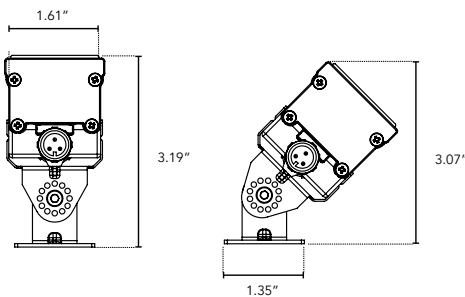
For vertical installation and installations above 4' please contact the factory for specific mounting instructions.



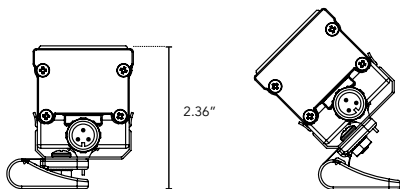
**MOUNTING INFORMATION:**

Note: Fixtures 1-2ft, Place clips 3" from edge as shown. Fixtures more than 2ft., Place clips 3.5" from edges as shown.

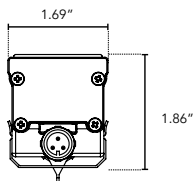
**Swivel**



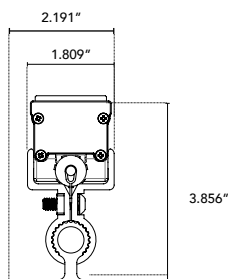
**Hinge**



**Fixed**



**Vandal Resistant**



**LENS OPTIONS:**

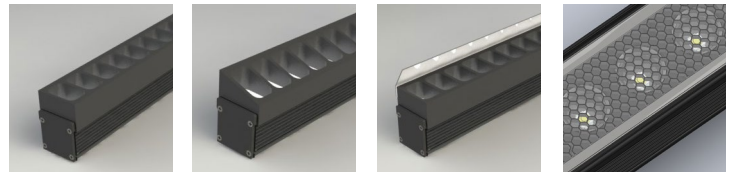
**DIFFUSED GLASS**

- 87% transmission
- Lens is 1/8" (.09) thick, adds 1/16" to overall height of fixture
- Additional charges apply

**SATIN ICE**

- Best for direct view use. Interior only.
- 42% transmission
- Lens is 1/4" (.25) thick, adds 1/8" to overall height of fixture
- Additional charges apply

**BAFFLE DETAILS:**



SB

ASYM

SKB

HL

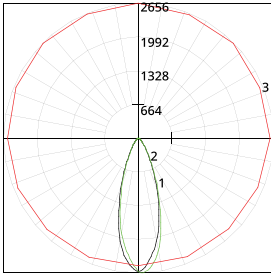
**BAFFLE SQUARE - SB, ASYM, SKB**

The design cuts off light at 90°, utilizing lightweight black PVC with non-reflective surfaces to avoid glare from interior sections. A one-piece baffle slides onto the extruded housing. The SB only adds 0.75" to the overall height, the ASYM adds 0.90" to the overall height, and the SKB adds 1.625" to the overall height.

**HEXCELL LOUVER - HL**

The louver cannot be utilized when no optic (120°) is specified. It is located flush to the secondary optic, preventing unwanted striation, and is positioned behind the lens to ensure no damage occurs during installation or afterward, also preventing dust build-up. The louver ships pre-fitted, making on-site fixture installation easy, with no unsightly clips, screws, or brackets. It can be used with other baffles and adds nothing to the overall height. Additional charges may apply.

**LUMINAIRE INFORMATION:**



Fixture Type: 3500°K, 24° optic, 120V, 12”  
 Total lumen Output: 4840 Lumens per 4ft.  
 Luminaire Efficacy: 80.6 Lumens per watt  
 Maximum Candela: 2655.83  
 Located at Horizontal Angle: 90  
 Vertical Angle: 2

LUMENS PER LAMP	1203.5 (1 lamp)
TOTAL LAMP LUMENS	1203.5
LUMINAIRE LUMENS	1204
TOTAL LUMINAIRE EFFICIENCY	100%
LUMEN EFFICACY RATING	80
TOTAL LUMINAIRE WATTS	15.02
BALLAST FACTOR	1.00
CIE TYPE	Direct
SPACING CRITERION (0-180)	0.58
SPACING CRITERION (90-270)	0.62
SPACING CRITERION (Diagonal)	0.60
BASIC LUMINOUS SHAPE	Rectangular
LUMINOUS LENGTH (0-180)	0.31m
LUMINOUS WIDTH (90-270)	0.04m
LUMINOUS HEIGHT	0.00m

#1 - Vertical Plane Through Horizontal Angles (0 - 180)

#2 - Vertical Plane Through Horizontal Angles (90 - 270)

#3 - Horizontal Cone Through Vertical Angle (2) (Through Max. Cd.)

For lux multiply fc by 10.76fc reading taken at 100% capacity (no dimming)

	Optic Angle(*)	10	30	60	10x60	30x60	D	SB-C(10°)	SB-D(10°)	ASYM-C(10°)	ASYM-D(10°)	HL-C(10°)	HL-D(10°)	OW(10°)	K(10°)
<b>CCT</b>	2200	x0.93	x0.93	x0.93	x0.93	x0.93	x0.93	x0.93	x0.93	x0.93	x0.93	x0.93	x0.93	x0.93	x0.93
<b>CCT</b>	2400	x0.93	x0.93	x0.93	x0.93	x0.93	x0.93	x0.93	x0.93	x0.93	x0.93	x0.93	x0.93	x0.93	x0.93
<b>CCT</b>	2700	x0.96	x0.96	x0.96	x0.96	x0.96	x0.96	x0.96	x0.96	x0.96	x0.96	x0.96	x0.96	x0.96	x0.96
<b>CCT</b>	3000	x0.98	x0.98	x0.98	x0.98	x0.98	x0.98	x0.98	x0.98	x0.98	x0.98	x0.98	x0.98	x0.98	x0.98
<b>CCT</b>	3500	1416	1332	1286	1225	1157	1247	1272	1120	1267	1110	1189	1046	725	1315
<b>CCT</b>	4000	x1.15	x1.15	x1.15	x1.15	x1.15	x1.15	x1.15	x1.15	x1.15	x1.15	x1.15	x1.15	x1.15	x1.15
<b>CCT</b>	5000	x1.32	x1.32	x1.32	x1.32	x1.32	x1.32	x1.32	x1.32	x1.32	x1.32	x1.32	x1.32	x1.32	x1.32
	5W	x0.36	x0.36	x0.36	x0.36	x0.36	x0.36	x0.36	x0.36	x0.36	x0.36	x0.36	x0.36	x0.36	x0.36
	8W	x0.55	x0.55	x0.55	x0.55	x0.55	x0.55	x0.55	x0.55	x0.55	x0.55	x0.55	x0.55	x0.55	x0.55
	10W	x0.62	x0.62	x0.62	x0.62	x0.62	x0.62	x0.62	x0.62	x0.62	x0.62	x0.62	x0.62	x0.62	x0.62