



HPNLS-RT

Low Voltage Linear LED Strip Fixture



Customer: _____ Date: _____

Project: _____

Wattage	8W per linear ft.
Input Voltage	12-48 VAC
Control	Standard magnetic low voltage dimming - AC only. Forward/Reverse Phase Line Dimmer, 0-10V, DALI, DMX*
LED Spacing	1.5" on Center
Length	12"-96", 6" increments -12" minimum. Allow 1/4" for each end cap and 2" for power feed cable.
Total Height	1.75" (not including clip)
Total Width	1.68"
Color Options	2700K, 3000K, 3500K, 4000K, 5000K, Amber, Red, Green, Blue
Mounting	Fixed, Swivel, 3" Arc or 6" Arc
Available Optics	10°, 30°, 60°, 10°x60°, 30°x60°, 120°
Rating	IP50, IP67, IP69K
CRI	90+ CRI
Power Cable	UL Standard 10 ft.
Finish	Black, White, Grey
Materials	Anodized Aluminum
Custom	Contact Factory
Dimming	Patented CleanDim® Technology ensures even dimming from 0-100%.
Max Run	Voltage Dependent (Class 2 Limited)
Environmental	Operating temperature: -40°F-140°F Ambient(-40°C-60°C)** Storage temperature: -40°F-140°F Ambient indoor fixtures operation limited to =<50% relative humidity

** Military spec available under special request-lead times may be impacted.

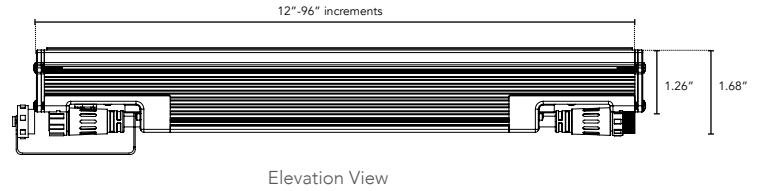
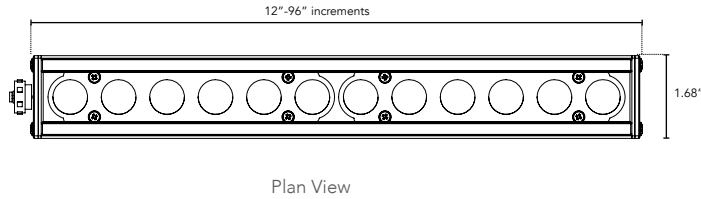


PRODUCT SPECIFICATIONS:

		COLOR OPTION	OPTIC	VOLTAGE	FINISH	LOCATION	MOUNTING	LENS	OPTIONS
HPNLS	RT	2700K	10°	120V	W White	I Interior-IP50	F Fixed	C Clear	SB Square Baffle
		3000K	30°	277V	B Black	E Exterior-IP67	S Swivel	D Diffused	ASYM Asymmetric Baffle
		3500K	60°		G Gray	K Extreme Environment-IP69K	3Arc 3" Arc Swivel	SI Satin Ice (Interior Use Only)	SKB Kicker Baffle
		4000K	10°x60°	Fixture is 12-48VAC			6Arc 6" Arc Swivel	V Vandal Resistant	HL Hexcell Louver (Cannot be used with Satin Ice White or 120° optic)
		5000K	30°x60°					OW Opal White (Exterior Use Only)	
		Amber	120°						
		Red		*If ordering 17VDC					
		Green		fixture, note here and contact factory					
		Blue							

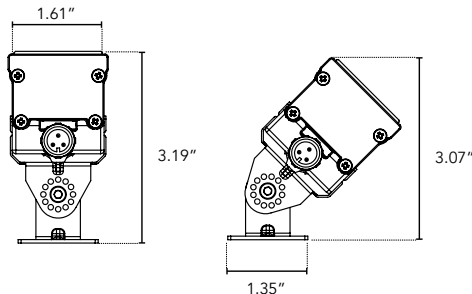
DIMENSIONS:

For vertical installation and installations above 4' please contact the factory for specific mounting instructions.

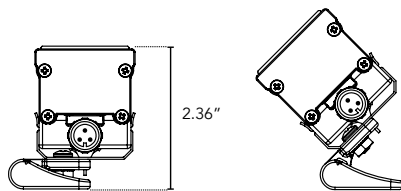


MOUNTING INFORMATION:

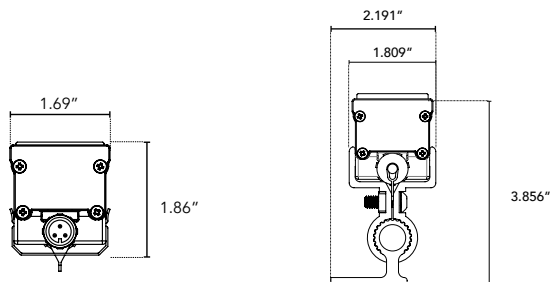
Note: Fixtures 1-2ft, Place clips 3" from edge as shown. Fixtures more than 2ft., Place clips 3.5" from edges as shown.



Swivel



Hinge



Fixed

Vandal Resistant

LENS OPTIONS:

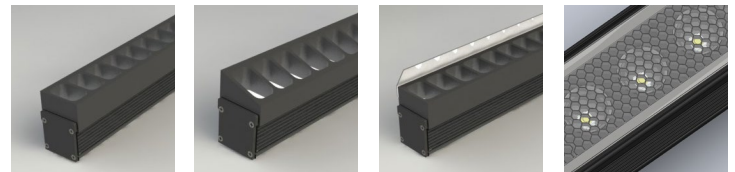
DIFFUSED GLASS

- 87% transmission
- Lens is 1/8" (.09) thick, adds 1/16" to overall height of fixture
- Additional charges apply

SATIN ICE

- Best for direct view use. Interior use only.
- 42% transmission
- Lens is 1/4" (.25) thick, adds 1/8" to overall height of fixture
- Additional charges apply

BAFFLE DETAILS:



SB

ASYM

SKB

HL

BAFFLE SQUARE - SB, ASYM, SKB

The design cuts off light at 90°, utilizing lightweight black PVC with non-reflective surfaces to avoid glare from interior sections. A one-piece baffle slides onto the extruded housing. The SB only adds 0.75" to the overall height, the ASYM adds 0.90" to the overall height, and the SKB adds 1.625" to the overall height.

HEXCELL LOUVER - HL

The louver cannot be utilized when no optic (120°) is specified. It is located flush to the secondary optic, preventing unwanted striation, and is positioned behind the lens to ensure no damage occurs during installation or afterward, also preventing dust build-up. The louver ships pre-fitted, making on-site fixture installation easy, with no unsightly clips, screws, or brackets. It can be used with other baffles and adds nothing to the overall height. Additional charges may apply.