

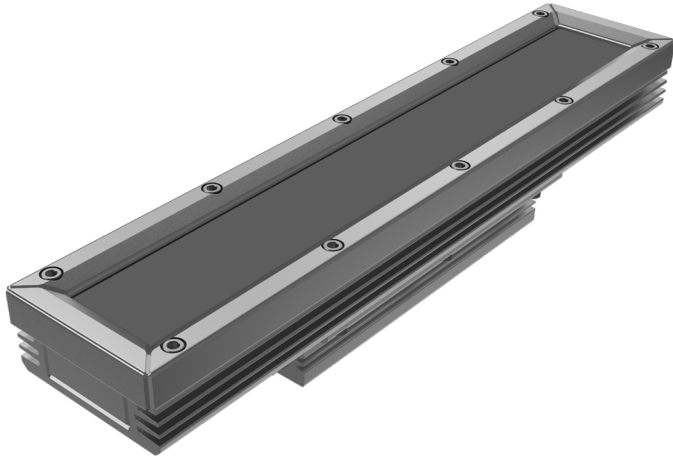


HPCCS

Small Profile Color Changing LED Fixture

Customer: _____ Date: _____

Project: _____



Wattage	22W per linear ft.
Input Voltage	90-120V, 230-277V
Control	Standard DMX 512, WA5 required for wireless transmission
LED Spacing	1.0" on center
Length	1 ft., 4 ft.
Total Height	2.54" (not including clip)
Total Width	2.70"
Color Options	Alternating RGB, Triple Diode RGB, White Mixing
Mounting	Fixed, Hinge or Vandal
Available Optics	10°, 30°, 60°, 10°x60°, 30°x60°, 120°
Rating	IP50, IP65, IP68
CRI	90+ for White Mix Only
Materials	Anodized Aluminum Housing
Custom	Contact Factory
Power Cable	UL Standard 10 ft.
Environmental	Operating temperature: -40°F-140°F Ambient(-40°C-60°C)** Storage temperature: -40°F-140°F Ambient indoor fixtures operation limited to =<50% relative humidity

*Custom wattage available upon request.
Title 24 compliant fixture not to exceed 18 watts / 4ft fixture.
** Military spec available under special request-lead times may be impacted.



*Contact factory for Extreme Enironment Installations

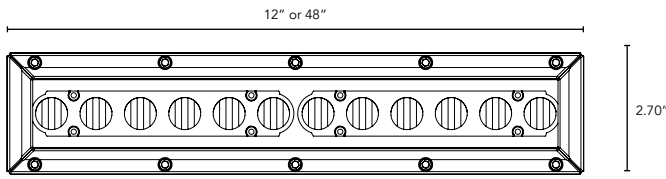
PRODUCT SPECIFICATIONS:

COLOR OPTION	OPTIC	VOLTAGE	FINISH	LOCATION	MOUNTING	LENS
HPCCS			A			C
RGB	10°	120V	A Clear Anodized Aluminum	I Interior-IP50 E Exterior-IP67	F Fixed H Hinge V Vandal Resistant	C Clear
TRGB Triple Diode (120° only)	30°	277V				
WM White Color Mixing	60° 10°x60° 30°x60° 120°					
*See White Mix Options						
WHITE MIXING OPTIONS		HEXCELL				

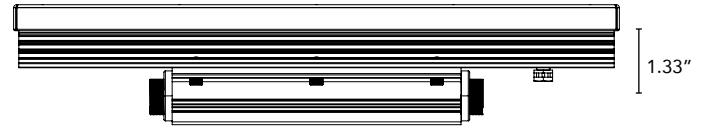
If specifying WM indicate white options here: **Y** Yes
(Up to 3 different options can be specified) **N** No

- 2700K
- 3000K
- 3500K
- 4000K
- 5000K
- Amber

DIMENSIONS:



Plan View

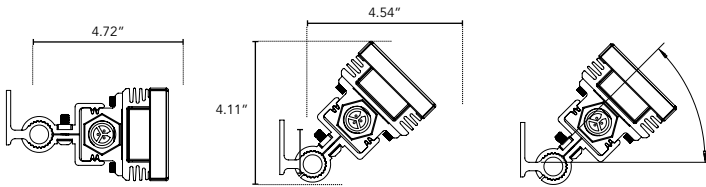


Elevation View

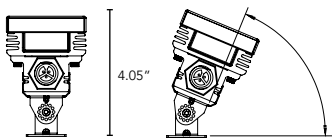
MOUNTING INFORMATION:

For vertical installation and installations above 4' please contact the factory for specific mounting instructions.

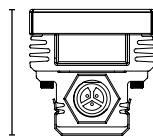
Hinge



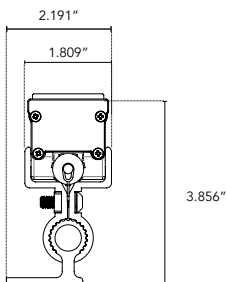
Swivel



Fixed



Vandal Resistant



LIGHTSOURCE REPORT

White w/Clear Glass Lens

CIE Colorimetric Parameters
CCT: Tc = 3088K

Photometric Parameters
Luminous Flux: 634.40 lm
Efficiency: 59.46 lm/W

White w/Clear Glass Lens

RGBW w/Clear Glass Lens
CCT: Tc = 4392K

Photometric Parameters
Luminous Flux: 922.16 lm
Efficiency: 34.65 lm/W