

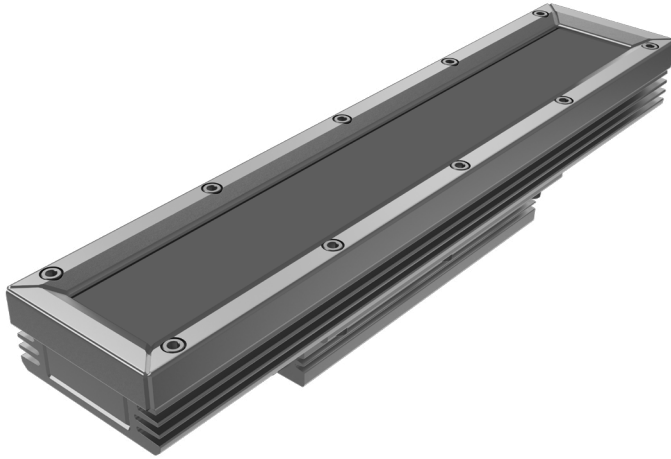


# HPCCS

Small Profile Color Changing LED Fixture

Customer: \_\_\_\_\_ Date: \_\_\_\_\_

Project: \_\_\_\_\_



<b>Wattage</b>	22W per linear ft.
<b>Input Voltage</b>	90-120V, 230-277V
<b>Control</b>	Standard DMX 512, WA5 required for wireless transmission
<b>LED Spacing</b>	1.0" on center
<b>Length</b>	1 ft., 4 ft.
<b>Total Height</b>	2.54" (not including clip)
<b>Total Width</b>	2.70"
<b>Color Options</b>	Alternating RGB, Triple Diode RGB, White Mixing
<b>Mounting</b>	Fixed, Hinge or Vandal
<b>Available Optics</b>	10°, 30°, 60°, 10°x30°, 10°x60°, 30°x60°, 120°
<b>Rating</b>	IP50, IP65, IP68
<b>CRI</b>	90+ for White Mix Only
<b>Materials</b>	Anodized Aluminum Housing
<b>Custom</b>	Contact Factory
<b>Power Cable</b>	UL Standard 10 ft.
<b>Environmental</b>	Operating temperature: -40°F-140°F Ambient(-40°C-60°C)** Storage temperature: -40°F-140°F Ambient indoor fixtures operation limited to =<50% relative humidity

\*Custom wattage available upon request.  
Title 24 compliant fixture not to exceed 18 watts / 4ft fixture.  
\*\* Military spec available under special request-lead times may be impacted.



\*Contact factory for Extreme Environment Installations

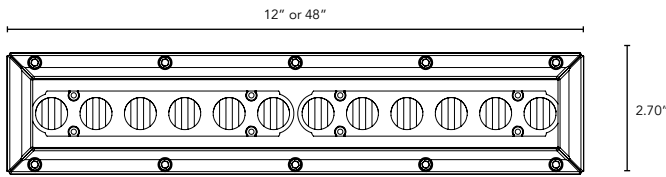
## PRODUCT SPECIFICATIONS:

COLOR OPTION	OPTIC	VOLTAGE	FINISH	LOCATION	MOUNTING	LENS
<b>HPCCS</b>			<b>A</b>			<b>C</b>
<b>RGB</b>	<b>10°</b>	<b>120V</b>	<b>A</b> Clear Anodized Aluminum	<b>I</b> Interior-IP50 <b>E</b> Exterior-IP67	<b>F</b> Fixed <b>H</b> Hinge <b>V</b> Vandal Resistant	<b>C</b> Clear
<b>TRGB</b> Triple Diode (120° only)	<b>30°</b>	<b>277V</b>				
<b>WM</b> White Color Mixing	<b>60°</b>					
	<b>10°x30°</b>					
	<b>10°x60°</b>					
*See White Mix Options	<b>30°x60°</b>					
	<b>120°</b>					
WHITE MIXING OPTIONS		HEXCELL				

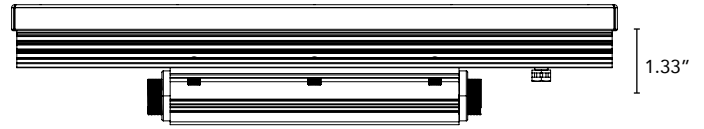
If specifying WM indicate white options here: **Y** Yes  
(Up to 3 different options can be specified) **N** No

- 2700K
- 3000K
- 3500K
- 4000K
- 5000K
- Amber

**DIMENSIONS:**



Plan View

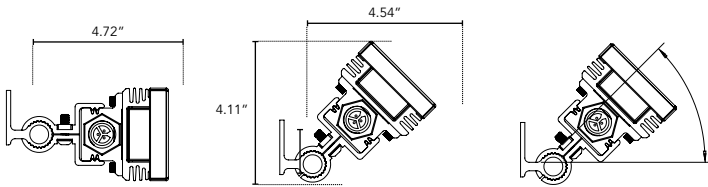


Elevation View

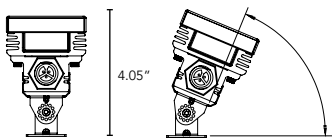
**MOUNTING INFORMATION:**

For vertical installation and installations above 4' please contact the factory for specific mounting instructions.

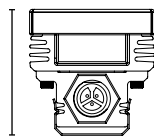
**Hinge**



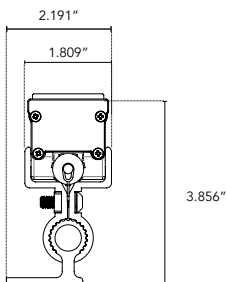
**Swivel**



**Fixed**



**Vandal Resistant**



**LIGHTSOURCE REPORT**

**White w/Clear Glass Lens**

CIE Colorimetric Parameters  
CCT: Tc = 3088K

Photometric Parameters  
Luminous Flux: 634.40 lm  
Efficiency: 59.46 lm/W

**White w/Clear Glass Lens**

RGBW w/Clear Glass Lens  
CCT: Tc = 4392K

Photometric Parameters  
Luminous Flux: 922.16 lm  
Efficiency: 34.65 lm/W