



HPNLS-LO

Line Voltage Linear LED Strip Fixture

Customer: _____ Date: _____

Project: _____



Wattage	5W, 8W, or 10W per linear ft.
Input Voltage	90-120V, 230-277V
Control	Forward/Reverse Phase Line Dimmer 0-10V, DMX*
LED Spacing	1.5" on Center
Length	12", 18", 24", 36", 48", 96"
Total Height	1.75" (not including clip)
Total Width	1.68"
Color Options	2700K, 3000K, 3500K, 4000K, 5000K, Amber, Red, Green, Blue
Mounting	Fixed, Swivel, Hinge, 3" Arc, 6" Arc or Vandal Resistant
Available Optics	10°, 30°, 60°, 10°x60°, 30°x60°, 120°
Rating	IP50, IP67, IP69K
CRI	90+ CRI
Power Cable	UL Standard 10 ft.
Finish	Black, White, Grey
Material	Anodized Aluminum
Custom	Contact Factory
Dimming	Patented CleanDim® Technology ensures even dimming from 0-100%.
Environmental	Operating temperature: -40°F-140°F Ambient(-40°C-60°C)** Storage temperature -40°F-140°F Ambient indoor fixtures operation limited to =<50% relative humidity

*Uses Boca SDS Module for 0-10V, DALI, or DMX Dimming.

** Military spec available under special request-lead times may be impacted.

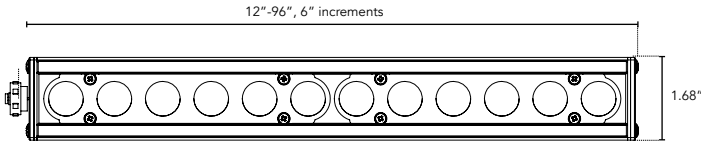


PRODUCT SPECIFICATIONS:

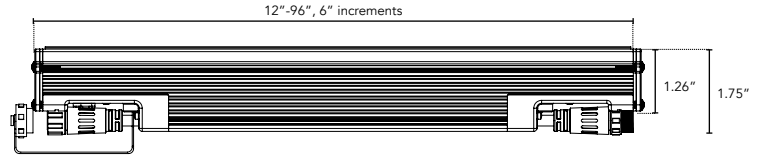
	WATTAGE	COLOR OPTION	OPTIC	VOLTAGE	FINISH	LOCATION	MOUNTING	LENS	OPTIONS
HPNLS	LO8 5W/FT LO8 8W/FT LO8 10W/FT	2700K 3000K 3500K 4000K 5000K Amber Red Green Blue	10° 30° 60° 10°x60° 30°x60° 120°	120V 277V	W White B Black G Gray	I Interior-IP50 E Exterior-IP67 K Extreme Environment - IP69K	F Fixed S Swivel H Hinge 3Arc 3" Arc Swivel 6Arc 6" Arc Swivel V Vandal Resistant	C Clear D Diffused SI Satin Ice (Interior Use Only) OP Opal White	SB Square Baffle ASYM Asymmetric Baffle SKB Kicker Baffle HL Hexcell Louver* *Cannot be used with Satin Ice White or 120° optic

DIMENSIONS:

For vertical installation and installations above 4' please contact the factory for specific mounting instructions.



Plan View

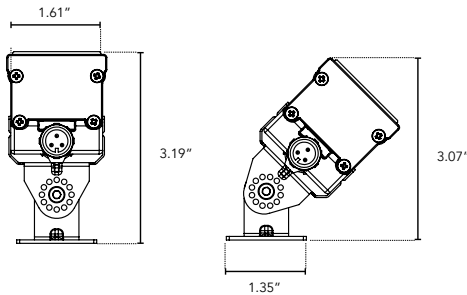


Elevation View

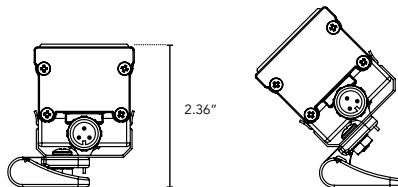
MOUNTING INFORMATION:

Note: Fixtures 1-2ft, Place clips 3" from edge as shown. Fixtures more than 2ft., Place clips 3.5" from edges as shown.

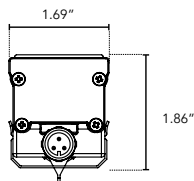
Swivel



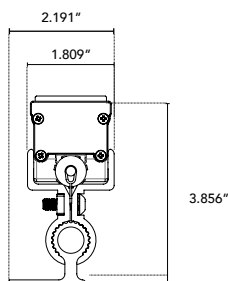
Hinge



Fixed



Vandal Resistant



LENS OPTIONS:

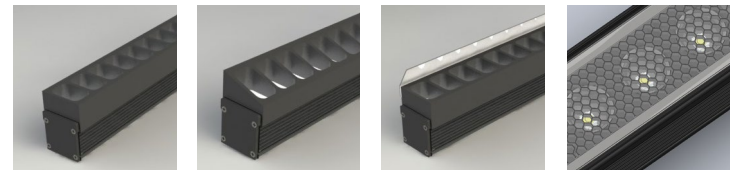
DIFFUSED GLASS

- 87% transmission
- Lens is 1/8" (.09) thick, adds 1/16" to overall height of fixture
- Additional charges apply

SATIN ICE WHITE

- Best for direct view use. Interior use only.
- 42% transmission
- Lens is 1/4" (.25) thick, adds 1/8" to overall height of fixture
- Additional charges apply

BAFFLE DETAILS:



SB

ASYM

SKB

HL

BAFFLE SQUARE - SB, ASYM, SKB

The design cuts off light at 90°, utilizing lightweight black PVC with non-reflective surfaces to avoid glare from interior sections. A one-piece baffle slides onto the extruded housing. The SB only adds 0.75" to the overall height, the ASYM adds 0.90" to the overall height, and the SKB adds 1.625" to the overall height.

HEXCELL LOUVER - HL

The louver cannot be utilized when no optic (120°) is specified. It is located flush to the secondary optic, preventing unwanted striation, and is positioned behind the lens to ensure no damage occurs during installation or afterward, also preventing dust build-up. The louver ships pre-fitted, making on-site fixture installation easy, with no unsightly clips, screws, or brackets. It can be used with other baffles and adds nothing to the overall height. Additional charges may apply.

LUMINAIRE INFORMATION:

Fixture Type	3500°K, 30x60° Optic, 120V, 12"
Lumens Per Lamp	936 (1 lamp)
Total Lamp Lumens	936
Luminaire Lumens	936
Total Luminaire Efficiency	100%
Lumen Efficacy Rating	94
Total Luminaire Watts	10.02
Ballast Factor	1.00
CIE Type	Direct
Spacing Criterion (0-180)	0.58
Spacing Criterion (90-270)	0.62
Spacing Criterion (Diagonal)	0.60
Basic Luminous Shape	Rectangular
Luminous Length (0-180)	0.31m
Luminous Width (90-270)	0.04m
Luminous Height	0.05m

Lo8 Data - 10W for 6W use 0.65 multiplier
Specific Files Available On Request