



HPNFC-RT

Interior Shallow Profile Linear LED Strip Fixture



Customer: _____ Date: _____

Project: _____

Wattage	10W per linear ft.
Input Voltage	12-48 VAC
Control	Standard Magnetic Low Voltage Dimming, Forward/Reverse Phase, 0-10V, DMX, DALI
LED Spacing	1.5" on Center
Length	12" - 96", 6" increments - 12" minimum
Total Height	1.04" (not including clip), Satin Ice Lens adds 1/8"
Total Width	1.68"
Color Options	2700K, 3000K, 3500K, 4000K, 5000K, Amber, Red, Green, Blue
Mounting	Fixed, Swivel, 3" Arc or 6" Arc
Available Optics	10°, 30°, 60°, 10°x 60°, 30°x 60°, 120°
Rating	IP50 - Contact Factory for IP67 and IP69K.
CRI	90+ CRI
Power Cable	UL Standard 10 ft.
Finish	White, Black and Gray
Materials	Anodized Aluminum
Custom	Contact Factory
Max Run	Voltage Dependent (Class 2 Limited)
Dimming	Patented CleanDim® Technology ensures even dimming from 0-100%.
Environmental	Operating temperature: -40°F-140°F Ambient (-40°C-60°C)** Storage temperature: -40°F-140°F Ambient indoor fixtures operation limited to =<50% relative humidity

** Military spec available under special request-lead times may be impacted.



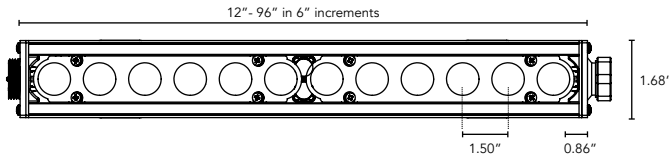
*Contact Factory for Exterior Installations

PRODUCT SPECIFICATIONS:

		COLOR OPTION	OPTIC	VOLTAGE	FINISH	LOCATION	MOUNTING	LENS	OPTIONS
HPNFC	RT					I			
		2700K	10°	120V	W White	I Interior-IP50	F Fixed	C Clear	HL Hexcell Louver
		3000K	30°	277V	B Black		S Swivel	D Diffused	SB Square Baffle
		3500K	60°	Fixture is 12-24VAC	G Gray		H Hinge	SI Satin Ice (Interior Use Only)	ASYM Asymmetric Baffle
		4000K	10°x60°			*Contact Factory for IP67 and IP69K.	3Arc 3" Arc Swivel		SKB Kicker Baffle
		5000K	30°x60°				6Arc 6" Arc Swivel		HL* Hexcell Louver (Cannot be used with Satin Ice White or 120° optic)
		Amber	120°						
		Red							
		Green							
		Blue							

DIMENSIONS:

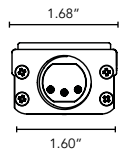
For vertical installation and installations above 4' please contact the factory for specific mounting instructions.



Plan View



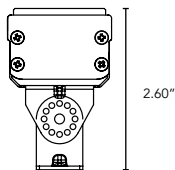
Elevation View



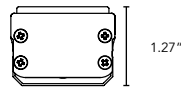
End View

MOUNTING INFORMATION:

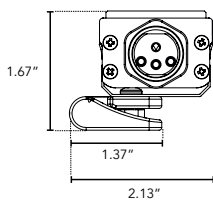
For vertical installation please contact the factory for specific mounting instructions.



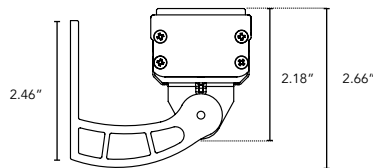
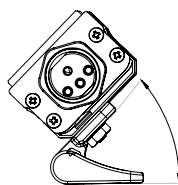
Swivel



Fixed



Hinge



Arc

LENS OPTIONS:

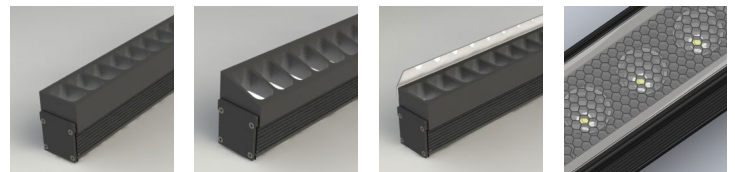
DIFFUSED GLASS

- 87% transmission
- Lens is 1/8" (.09) thick, adds 1/16" to overall height of fixture
- Additional charges apply

SATIN ICE

- Best for direct view use. Interior use only.
- 42% transmission
- Lens is 1/4" (.25) thick, adds 1/8" to overall height of fixture

BAFFLE DETAILS:



SB

ASYM

SKB

HL

BAFFLE SQUARE - SB, ASYM, SKB

The design cuts off light at 90°, utilizing lightweight black PVC with non-reflective surfaces to avoid glare from interior sections. A one-piece baffle slides onto the extruded housing. The SB only adds 0.75" to the overall height, the ASYM adds 0.90" to the overall height, and the SKB adds 1.625" to the overall height.

HEXCELL LOUVER - HL

The louver cannot be utilized when no optic (120°) is specified. It is located flush to the secondary optic, preventing unwanted striation, and is positioned behind the lens to ensure no damage occurs during installation or afterward, also preventing dust build-up. The louver ships pre-fitted, making on-site fixture installation easy, with no unsightly clips, screws, or brackets. It can be used with other baffles and adds nothing to the overall height. Additional charges may apply.

LUMINAIRE INFORMATION:

LUMENS PER LAMP -3500K 30X60	936 (1 lamp)
TOTAL LAMP LUMENS	936
LUMINAIRE LUMENS	936
TOTAL LUMINAIRE EFFECIENCY	100%
LUMEN EFFECACY RATING	94
TOTAL LUMINAIRE WATTS	10.02
BALLAST FACTOR	1.00
CIE TYPE	Direct
SPACING CRITERION (0-180)	0.58
SPACING CRITERION (90-270)	0.62
SPACING CRITERION (Diagonal)	0.60
BASIC LUMINOUS SHAPE	Rectangular
LUMINOUS LENGTH (0-180)	0.31m
LUMINOUS WIDTH (90-270)	0.04m
LUMINOUS HEIGHT	0.03m

- HPNFC - 10W
- Specific Files Available On Request