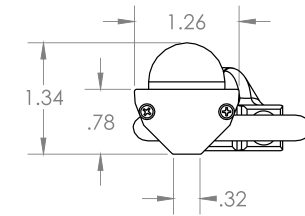
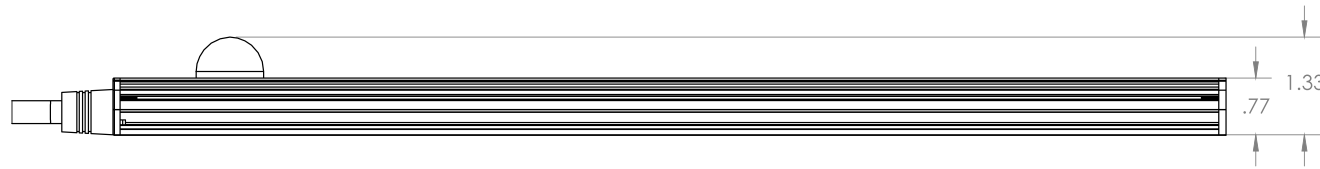


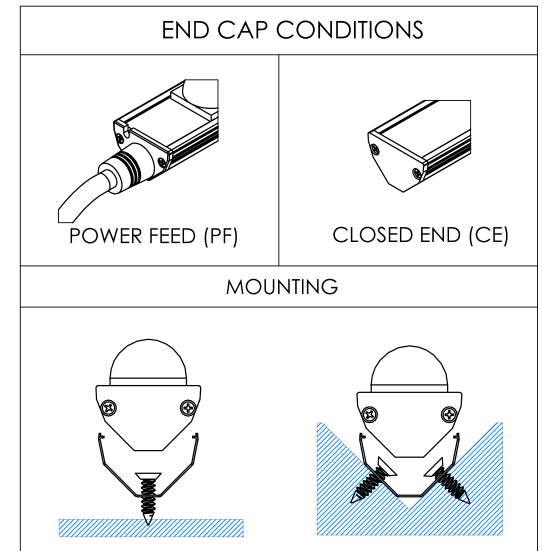
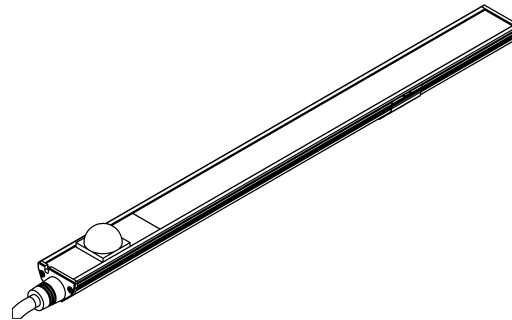
1 PLAN VIEW



3 END CAP



2 ELEVATION VIEW



TECHNICAL DATA	
Parameter	Data
Wattage	4 or 8 watts per linear ft
Input Voltage	120VAC
Input Current per Linear Ft	Model Dependant
Control	Leading edge/ Trailing-edge line dimming, 0-10V
Power Cable Length	UL Standard 10ft
LED Spacing	5/8" on Center
Fixture Width	1.43"
Total Height	Not including clip: 0.73"
Mounting	Fixed
Available Optics	120°
Finish Options	Clear Anodized Aluminum
LED Color Options	2400K, 2700K, 3000K, 3500K, 4000K
Color Rendering Index	90+ CRI
Ratings	Interior Only
Total linear ft per 20A breaker	225ft
Total linear ft per 15A breaker	170ft

 LIGHTING CONTROLS LED Lighting Systems, Technologies, & Manufacturing		PRODUCT NAME: NANOWEDGE		
		FILE NAME: TECHNICAL SHEET	PART #: NANOWEDGE	
508 South Military Trail Deerfield Beach FL, 33442		www.BocaFlasher.com (561) 989-5338	DRAWN BY: HYERI KANG	DATE: 03272020
THIS DOCUMENT IS CONFIDENTIAL AND PROTECTED BY COPYRIGHTS OF BOCA FLASHER INC.		DESIGN BY: LUIS ROSADO	APPROVED BY: M. PINDER	
SCALE:	SHEET: 1 OF 1	REV: A		