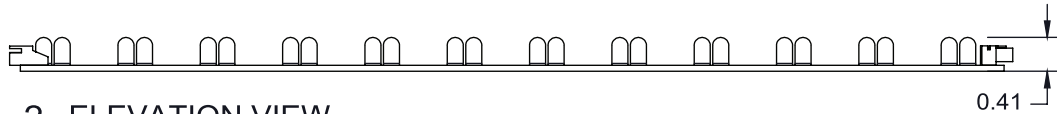


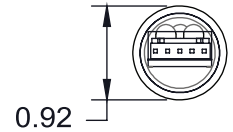
1 PLAN VIEW
SCALE: 6"=1'-0"



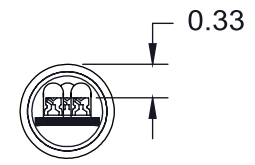
2 ELEVATION VIEW
SCALE: 6"=1'-0"



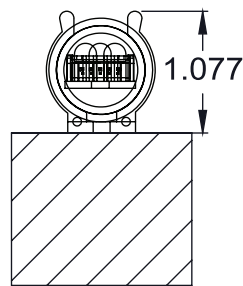
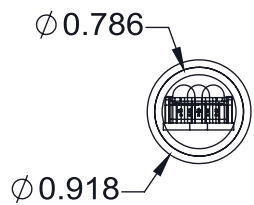
3 PLAN VIEW IN TUBE
SCALE: 6"=1'-0"



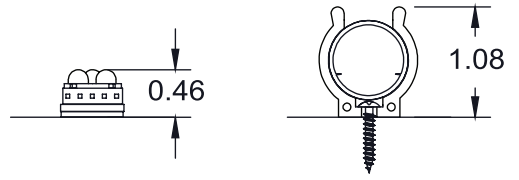
4 SIDE VIEW IN TUBE
SCALE: 6"=1'-0"



5 SECTION
SCALE: 6"=1'-0"



MOUNTING OPTIONS



MOUNTING TAPE TUBE

(fixture can rotate in tube)

TECHNICAL DATA	
Power	4 Watts per linear foot
Input Voltage	24VDC or 24VAC
Input Current per Linear Ft	150mA RMS per Linear Foot
Control	DMX 512 Input
Power Cable Length	25ft, 35ft, or 45ft (Job Specific)
LED Spacing	1" on center
Fixture Length	6" or 8" increments
Fixture Width	0.62"
Total Height (not including clips)	0.41"
Mounting	Tube, Underwater Tube, No Tube
Available Optics	Color: 30°, 120° - White: 15°, 50°, 120°
Finish Options	N/A
LED Color Options	RGB, White Color Mixing
Color Rendering Index	80
Ratings	Dry, IP66, IP68
Total Linear ft per 20A breaker	420 feet
Total Linear ft per 15A breaker	300 feet
Total Linear ft per Power Feed	10 feet
Transformer	Primary 120V or 277V, Secondary 24V



LIGHTING | CONTROLS

LED Lighting Systems, Technologies, & Manufacturing

508 South Military Trail
Deerfield Beach FL, 33442

www.BocaFlasher.com
(561) 989-5338

THIS DOCUMENT IS CONFIDENTIAL AND PROTECTED BY COPYRIGHTS OF BOCA FLASHER INC.

PRODUCT NAME: CCS100		
FILE NAME: TECHNICAL SHEET	PART #: CCS100	
DRAWN BY: DEMMLER FILLINGER	DATE: 03272020	
DESIGN BY: LUIS ROSADO		
APPROVED BY: STEPHANIE BURKE		
SCALE: NTS	SHEET: 1 OF 1	REV: