

TRI-LIGHT HV

Triple Diode DMX Controlled Linear LED Fixture

Customer:

Date:

Type:

Project:



- Triple diode ensures even color washing even at short distances.
- Compact, variable light fixture for dry, damp or wet location use.
- Fixture comes in 6" increments (12" minimum).
- Many options in accessories and optics to suit a range of projects.
- UL Listed for dry or damp or wet location (model dependent).
- Anodized aluminum housing with a durable finish ensuring it is weather and abrasion resistant.
- Powder coat housing with a durable finish making it weather and abrasion resistant.
- Multiple different types of lenses.
- Can use standard 512 DMX controls.
- Total 48 feet per power feed.



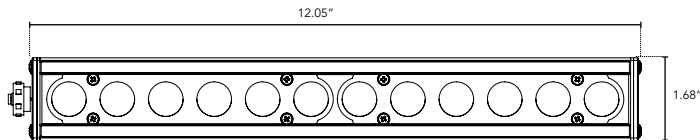
PRODUCT SPECIFICATIONS:

	COLOR OPTION	OPTIC	VOLTAGE	LOCATION	FINISH	MOUNTING	LENS
Tri-Light-HV		120°	120VAC				
	1 Triple Diode RGB 2 RGB with White			I Interior-IP50 E Exterior-IP65 W Wet-IP68	W White B Black G Gray	F Fixed S Swivel H Hinge V Vandal Resistant A Arc	C Clear D Diffused SI Satin Ice (Interior Use Only) OW Opal White (Exterior Use Only)

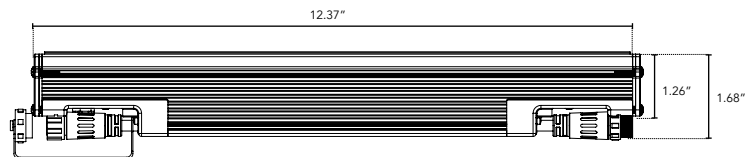
DIMENSIONS:

- For vertical installation please contact the factory for specific mounting instructions.
- For installations above 4' please contact the factory.

Plan View



Elevation View



TRI-LIGHT HV

Triple Diode DMX Controlled Linear LED Fixture

TECHNICAL SPECIFICATIONS:

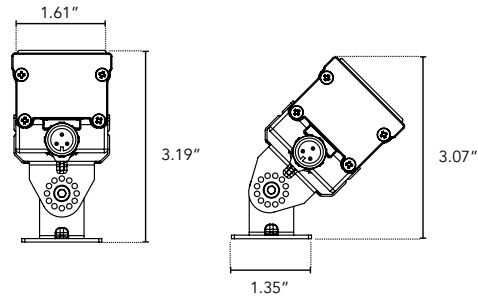
WATTAGE	12W Max, Software Controlled
INPUT VOLTAGE	120VAC
CONTROL	NANOROUTER w/ standard DMX512 control
LED SPACING	1.00"
LENGTH	12"-96", 6" Increment
TOTAL WIDTH	1.68"
TOTAL HEIGHT	1.80" (not including clip)
MOUNTING	Fixed, Swivel, Hinge, Arc or Vandal Resistant
AVAILABLE OPTICS	120°
FINISH	Black, White or Gray powder coat
COLOR OPTIONS	Triple diode RGB, or triple diode RGB w/ white option
INPUT CURRENT	120VAC
RATING	IP50, IP65, IP68
POWER CABLE	25 ft home run cable
ENVIRONMENTAL	Operating temperature -40°F-140°F Ambient (-40°C-60°C)** Storage temperature -40°F-140°F Ambient indoor fixtures operation limited to =<50% relative humidity

* Military spec available under special request-lead times may be impacted.

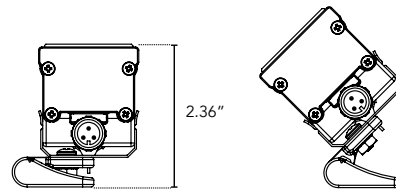
MOUNTING INFORMATION:

- Fixtures 1-2ft, Place clips 3" from edge as shown.
- Fixtures more than 2ft, Place clips 3.5" from edges as shown.

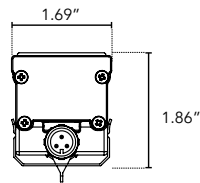
Swivel



Hinge



Fixed



Vandal Resistant

