



InGrade

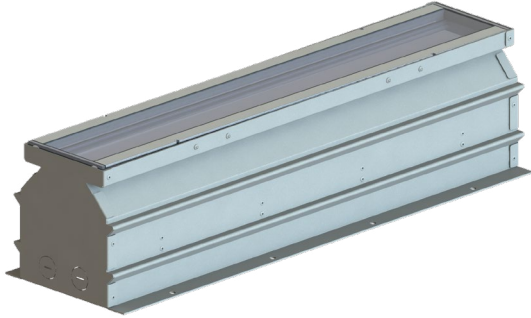
In Ground, Recessed LED Light Chamber

Customer:

Date:

Type:

Project:



- Medium Duty Vehicle Load - Class 6 defined as a vehicle with a gross weight of: 11.75 tons. (26,000lbs)
- High heel load - 300lbs High heel size: 10 mm diameter Area: 78.54 mm² (0.122in²)
- Glass set to Boron Silicate
- Glass: 33 MPA
- Highest Stress on Glass: 25 MPA
- Aluminum for the frame: 6061-T6.
- Aluminum: 276 MPA Yield
- Aluminum: 310 MPA Ultimate
- Corrosion Resistant Rivets
- Copper Blind Rivets with Steel Mandrel
- Maximum Stress: 75.7 MPA - Found on the
- Aluminum structure that holds the glass.
- Stress well below Yield
- Housing for HPNLS/HPNFC body style Boca Flasher products

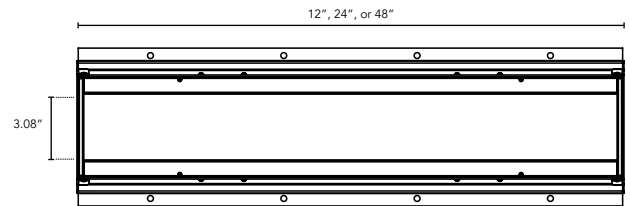
TECHNICAL SPECIFICATIONS:

AVAILABLE LENGTH	12", 24", 48"
COMPATIBLE LIGHT FIXTURES	HPNLS, Tri-Light, Lumeline
MINIMUM DRAINAGE RATES	12" (0.064 gal/min.), 24" (0.119 gal/min.), 48" (0.231 gal/min.)
GROUND MATERIALS	Gravel, concrete with drainage system
MAXIMUM WEIGHT	3,000 lbs. (over average car tire)
RATINGS	IP50, IP66
ENVIRONMENTAL	Operating temperature -40°F-140°F Ambient (-40°C-60°C)** Storage temperature -40°F-140°F Ambient indoor fixtures operation limited to =<50% relative humidity

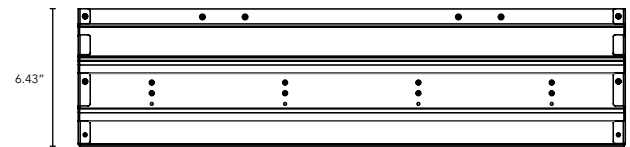
** Military spec available under special request-lead times may be impacted.

DIMENSIONS:

Plan View



Elevation View



End View

