



- Infrastructure Ready: Bridges, Airports, Tunnels, and Transit Stations
- Compact, variable light fixture for dry, damp or wet location use.
- Fixture comes in 6" increments (12" minimum).
- Many options in optics, color temperature and accessories.
- Variety of lenses and louvers.
- Boca Flasher's patented CleanDim® technology ensures even dimming from 0-100%.
- Uses standard line voltage dimmers.
- Fixtures are compatible with both forward and reverse phase dimming or can use Boca's SDS module for 0-10V, Dali or DMX Dimming.
- Powder coat housing with a durable finish making it weather and abrasion resistant.
- Extreme environment chromate underlayment with marine grade finish available as an option.
- Total linear feet per power feed: 40ft @ 120V (16W Version).
- 3G vibration rating that conforms to standards by ANSI C136.31



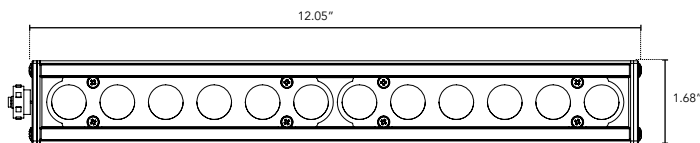
PRODUCT SPECIFICATIONS:

WATTAGE	COLOR OPTION	OPTIC	VOLTAGE	FINISH	LOCATION	MOUNTING	LENS	BODY OPTIONS
HPNLS-HO								
5W ASHRAE	2700K	10°	120V	W White	I Interior-IP50	F Fixed	C Clear	HL Hexcell Louver
8W	3000K	30°	277V	B Black	E Exterior-IP65	S Swivel	D Diffused	SB Square Baffle
16W	3500K	60°		G Gray	W Wet-IP68	H Hinge	SI Satin Ice (Interior Use Only)	ASYM Asymmetric Baffle
	4000K	10°x60°			K IP69K	3Arc 3" Arc Swivel	OP Opal White	SKB Kicker Baffle
	5000K	30°x60°				6Arc 6" Arc Swivel		HL* Hexcell Louver (Cannot be used with Satin Ice White or 120° optic)
	Amber	120°				V Vandal Proof Clip		
	Red							
	Green							
	Blue							

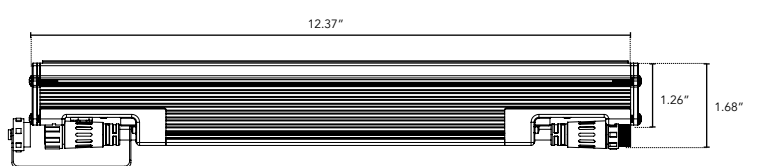
DIMENSIONS:

- For vertical installation please contact the factory for specific mounting instructions.
- For installations above 4' please contact the factory.

Plan View



Elevation View



HPNLS-HO

Line Voltage Linear LED Strip Fixture

TECHNICAL SPECIFICATIONS:

WATTAGE	5W (ASHRAE) or 8W or 16W per linear ft.
INPUT VOLTAGE	90-120V 230-277V
CONTROL	Leading Edge/Trailing Edge Line Dimmer, 0-10V, DALI, DMX*
LED SPACING	1" on center
LENGTH	12" - 96", 6" increments
TOTAL HEIGHT	1.75" (not including clip)
TOTAL WIDTH	1.68"
COLOR OPTIONS	2700K, 3000K, 3500K, 4000K, 5000K, amber, red, green, blue
MOUNTING	Fixed, Swivel, Hinge, 3" Arc, 6" Arc or Vandal Resistant
AVAILABLE OPTICS	10°, 30°, 60°, 10° x 60°, 30° x 60°, 120°
RATING	IP50, IP65, IP68, IP69K
COLOR RENDERING INDEX (CRI)	90 + CRI
POWER CABLE	UL Standard 10 ft.
ENVIRONMENTAL	Operating temperature -40°F-140°F Ambient (-40°C-60°C)** Storage temperature -40°F-140°F Ambient indoor fixtures operation limited to <=50% relative humidity

*Uses Boca SDS Module for 0-10V, Dali, or DMX Dimming.

** Military spec available under special request-lead times may be impacted.

LENS OPTIONS:

Diffused*

- 87% transmission.
- Lens is 1/8" (.09) thick, adds 1/16" to overall height of fixture.
Call factory for more information.

*Additional chargers apply

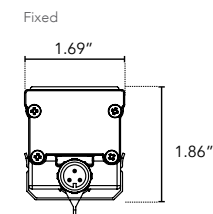
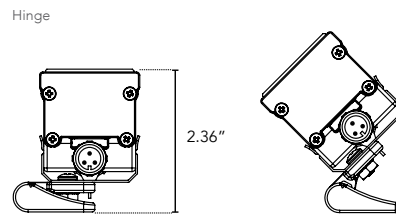
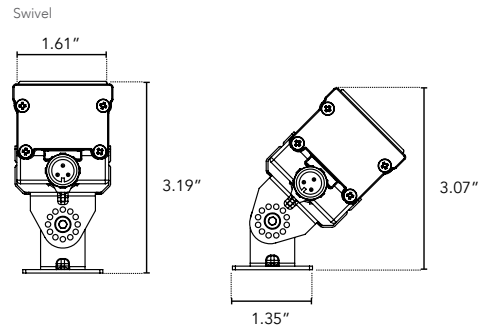
Satin Ice White*

- Best for direct view use.
- 42% transmission.
- Lens is 1/4" (.25) thick, adds 1/8" to overall height of fixture.
Call factory for more information.

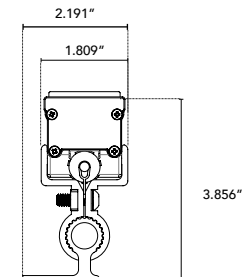
*Additional chargers apply.

MOUNTING INFORMATION:

- Fixtures 1-2ft, Place clips 3" from edge as shown.
- Fixtures more than 2ft, Place clips 3.5" from edges as shown.



Vandal Resistant

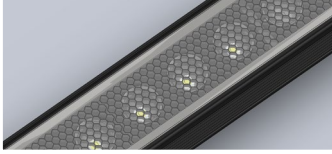


HPNLS-HO

Line Voltage Linear LED Strip Fixture



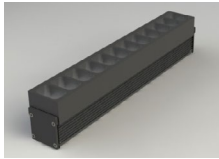
BODY CHOICES:



Hexcell Louver

- Economical solution to off axis glare issues.
- Louver is located flush to secondary optic, preventing unwanted striation.
- Louver cannot be utilized when no optic (120°) is specified.
- Louver is behind lens to ensure no damage is done during installation or after. This also ensures no dust build-up.
- Louver ships pre-fitted making on site fixture installation easy.
- No unsightly clips, screws, or brackets.
- Can be used with other baffles.
- Adds nothing to overall height.
- To specify add "HL" in options box.

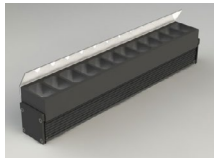
*Additional charges may apply.



SB - Square Baffle



ASYM - Asymmetric Baffle

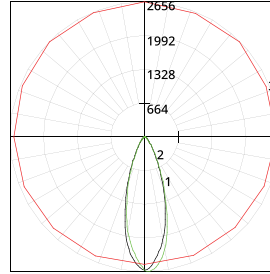


SKB - Sq. Kicker Baffle

Baffle Square Design

- Design cuts off light at 90°
- Baffles are lightweight black PVC with non-reflective surfaces to avoid glare from interior sections.
- One piece baffle slides onto the extruded housing making installation easy.
- SB only adds .75" to overall height
ASYM adds .90" to overall height
SKB adds 1.625" to overall height
- To specify add "SB" or "ASYM" for slanted version or "SKB" for kicker version in options box.

LUMINAIRE INFORMATION:



Fixture Type: 3500°K, 24° optic, 120V, 12"
 Total lumen Output: 4840 Lumens per 4ft.
 Luminaire Efficacy: 80.6 Lumens per watt
 Maximum Candela: 2655.83
 Located at Horizontal Angle: 90
 Vertical Angle: 2

- #1 - Vertical Plane Through Horizontal Angles (0 - 180)
- #2 - Vertical Plane Through Horizontal Angles (90 - 270)
- #3 - Horizontal Cone Through Vertical Angle (2) (Through Max. Cd.)

For lux multiply fc by 10.76fc reading taken at 100% capacity (no dimming)

Characteristics:

LUMENS PER LAMP	1203.5 (1 lamp)
TOTAL LAMP LUMENS	1203.5
LUMINAIRE LUMENS	1204
TOTAL LUMINAIRE EFFICIENCY	100%
LUMEN EFFICACY RATING	80
TOTAL LUMINAIRE WATTS	15.02
BALLAST FACTOR	1.00
CIE TYPE	Direct
SPACING CRITERION (0-180)	0.58
SPACING CRITERION (90-270)	0.62
SPACING CRITERION (Diagonal)	0.60
BASIC LUMINOUS SHAPE	Rectangular
LUMINOUS LENGTH (0-180)	0.31m
LUMINOUS WIDTH (90-270)	0.04m
LUMINOUS HEIGHT	0.00m

HPNLS-HO

Line Voltage Linear LED Strip Fixture



LUMINAIRE INFORMATION:

	Optic Angle(*)	10	30	60	10x60	30x60	D	SB-C(10°)	SB-D(10°)	ASYM-C(10°)	ASYM-D(10°)	HL-C(10°)	HL-D(10°)	OW(10°)	K(10°)
CCT	2200	x0.93	x0.93	x0.93	x0.93	x0.93	x0.93	x0.93	x0.93	x0.93	x0.93	x0.93	x0.93	x0.93	x0.93
CCT	2400	x0.93	x0.93	x0.93	x0.93	x0.93	x0.93	x0.93	x0.93	x0.93	x0.93	x0.93	x0.93	x0.93	x0.93
CCT	2700	x0.96	x0.96	x0.96	x0.96	x0.96	x0.96	x0.96	x0.96	x0.96	x0.96	x0.96	x0.96	x0.96	x0.96
CCT	3000	x0.98	x0.98	x0.98	x0.98	x0.98	x0.98	x0.98	x0.98	x0.98	x0.98	x0.98	x0.98	x0.98	x0.98
CCT	3500	1416	1332	1286	1225	1157	1247	1272	1120	1267	1110	1189	1046	725	1315
CCT	4000	x1.15	x1.15	x1.15	x1.15	x1.15	x1.15	x1.15	x1.15	x1.15	x1.15	x1.15	x1.15	x1.15	x1.15
CCT	5000	x1.32	x1.32	x1.32	x1.32	x1.32	x1.32	x1.32	x1.32	x1.32	x1.32	x1.32	x1.32	x1.32	x1.32
	5W	x0.36	x0.36	x0.36	x0.36	x0.36	x0.36	x0.36	x0.36	x0.36	x0.36	x0.36	x0.36	x0.36	x0.36
	8W	x0.55	x0.55	x0.55	x0.55	x0.55	x0.55	x0.55	x0.55	x0.55	x0.55	x0.55	x0.55	x0.55	x0.55
	10W	x0.62	x0.62	x0.62	x0.62	x0.62	x0.62	x0.62	x0.62	x0.62	x0.62	x0.62	x0.62	x0.62	x0.62